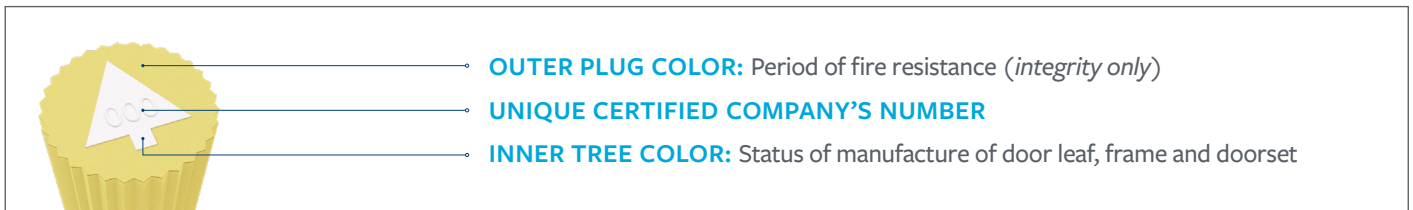



## Q-MARK FIRE DOOR PLUGGING DETAILS



### PLUG DEFINITIONS

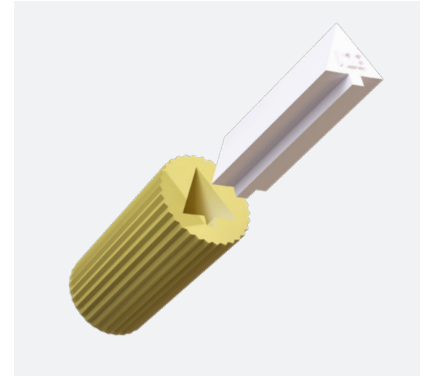


### PLUG OUTER COLORS



	<b>YELLOW OUTER</b>	<b>30 MINUTES</b> fire integrity period. Used for either a leaf, frame or complete doorsets.
	<b>BLUE OUTER</b>	<b>60 MINUTES</b> fire integrity period. Used for either a leaf, frame or complete doorsets.
	<b>BROWN OUTER</b>	<b>90 MINUTES</b> fire integrity period. Used for complete doorsets only.
	<b>BLACK OUTER</b>	<b>120 MINUTES</b> fire integrity period. Used for complete doorsets only.

## PLUG ASSEMBLY AND LOCATION


- Q-Mark fire door plugs come in two sections. The outer requires a Ø 9mm hole at 20mm depth to be drilled into the door leaf/frame. The inner tree then locates into the outer, ensuring that the customer specific certificate numbers at one end remain visible.
- The preference is for plugs to be fitted just below top hinge at around eye level.
- Plugs denoting a Complete Doorset will normally just be fitted to the door leaf but may also be fitted to the frame if desired which is in addition to the plug in the leaf.
- It is advised that plugs are fitted along the centerline of the leaf edge or the frame rebate where possible, however plugs should not be fitted through intumescent seals unless it cannot be avoided.
- All plugs must be spaced a minimum of 25mm distance between each plug and must also be located at least 25mm distance from the hinge or other items of hardware.



## DOOR LEAF OR DOOR FRAME (NOT APPLICABLE TO COMPOSITE DOOR MATERIAL TYPES, SCHEME 170)

 <p>RED</p>	<p>Fitted within the appropriate outer plug to a door leaf (leaf manufacture only) or door frame (frame manufacture only) to identify that it is a Q-Mark approved door leaf or door frame. The leaf and frame could come from different Q-Mark certified fire door manufacturers.</p> <p>The door leaf or door frame will not be in a finished state. The required intumescent strips will either not have been prepared for or be supplied at this stage. Therefore further work is needed to be carried out before the door leaf assembly is ready to be hung into a door frame.</p> <p>Clear instructions for further processing and installation of the door assembly must be supplied by the Q-Mark certified fire door manufacturer relating to a specific Initial Type test or Field of Application within the fire door manufacturer's scope of certification.</p>
 <p>GREEN</p>	<p>Fitted within the appropriate outer plug to a door leaf (leaf manufacture only) or door frame (frame manufacture only) to identify that it is a Q-Mark approved door leaf or door frame. The leaf and frame could come from different Q-Mark certified fire door manufacturers.</p> <p>The door leaf or door frame may not be in a finished state. It must be fully prepared for all the required intumescent strips around the perimeter gap, which can be either fitted or supplied loose but must be supplied. If the intumescent strips are supplied loose, they must be clearly identified to the appropriate door leaf or frame to which they will be fitted.</p> <p>The door leaf or frame might not be fully prepared for all of the appropriate hardware, in which case it must be clearly specified which hardware and any required associated intumescent protection is to be finally fitted at a later date by others.</p> <p>Clear instructions for the further processing and installation of the door assembly must be supplied by the Q-Mark certified fire door manufacturer relating to a specific Initial Type test or Field of Application within the fire door manufacturer's scope of certification.</p>

## GLAZING (ALL DOORSET MATERIAL TYPES)

 <p>ORANGE</p>	<p>Fitted within the appropriate outer plug to a door leaf only if glazing is in the door leaf. This plug is in addition to all other required plugs, to identify that glazing has been correctly specified and fitted to the door leaf by a Q-Mark certified fire door manufacturer as per the same Initial Type Test or Field of Application used to manufacture the door leaf.</p> <p>If glazing is included within an integral sidelight or fanlight (not within the door leaf), then all components for the glazing system must be specified and supplied by the certified fire door manufacturer, but may be finally fitted on site where necessary, in which case clear installation instructions must be provided by the Q-Mark certified fire door manufacturer relating to a specific initial Type Test or Field of Application within the fire door manufacturer's scope of certification.</p>
---	---

## COMPLETE DOORSET – Q-MARK CERTIFIED FOR FIRE ONLY (ALL DOORSET MATERIAL TYPES)



SILVER

Fitted within the appropriate outer plug to a door leaf and/or door frame to identify that it is a Q-Mark certified (factory hung) doorset. Where fire door plugs are not able to be fitted due to the doorset materials or design, then a label that depicts these plugs can be supplied by BM TRADA if necessary. The completed leaf and frame must have been physically quality checked together as a matched pair in the factory. The leaf and frame may then be sent to site at different times providing that clear traceability is in place to join the correct leaf and frame together again on site for installation.

There will be no further preparation work carried out to either the leaf or frame before it can be fitted into the building substrate. It is permissible for hardware such as locks, hinges or door closers etc. to be finally fitted during the installation process, but the preparations to accept the hardware will have been

completed by the Q-Mark certified fire door manufacturer. All items of hardware, along with the supply of any required intumescent protection materials, must be supplied by the Q-Mark certified fire door manufacturer and identified for the specific doorset.

Clear instructions for final assembly and installation of the doorset must be supplied by the Q-Mark certified fire door manufacturer relating to a specific Initial Type Test or Field of Application within their scope of certification.

The final assembly and installation of the doorset should be able to be completed with simple tools only, such as a screwdriver. No further preparations are allowed to be completed by the installer other than appropriate pilot holes for screws etc.

Smoke control cannot be claimed when a silver inner tree has been fitted.

## COMPLETE DOORSET – Q-MARK CERTIFIED FOR FIRE AND SMOKE CONTROL (ALL DOORSET MATERIAL TYPES)



WHITE

Fitted within the appropriate outer plug to a door leaf and/or door frame to identify that it is a Q-Mark certified (factory hung) doorset with fire resistance and smoke control. This is only applicable where a fire resistance & smoke control Field of Application is specifically shown on the certified manufacturer's scope of certification document for the particular manufactured doorset. Where Q-Mark plugs are not able to be fitted due to the doorset materials or design, then a label that depicts these plugs can be supplied by BM TRADA if necessary. The completed leaf and frame must have been physically quality checked together as a matched pair in the factory. The leaf and frame may then be sent to site at different times providing that clear traceability is in place to join the correct leaf and frame together again on site for installation.

There will be no further preparation work carried out to either the leaf or frame before it can be fitted into the building substrate. It is permissible for hardware such as locks, hinges or door closers etc. to be finally fitted during the installation process, but the preparations to accept the hardware will have been completed by the Q-Mark

certified fire door manufacturer. All items of hardware and smoke seals, along with the supply of any required intumescent protection materials, must be supplied by the Q-Mark certified fire door manufacturer and identified for the specific doorset.

Clear instructions for final assembly and installation of the doorset must be supplied by the Q-Mark certified fire door manufacturer relating to a specific Initial Type Test or Field of Application within their scope of certification.

The final assembly and installation of the doorset should be able to be completed with simple tools only, such as a screwdriver. No further preparations are allowed to be completed by the installer other than appropriate pilot holes for screws etc.

A White inner tree must be used where the doorset is manufactured to include both fire resistance and smoke control, which must be in accordance with the specific fire resistance and smoke control Field of Application report(s) listed on the manufacturer's Q-Mark scope of certification document for that specific doorset design.

## NON Q-MARK CERTIFIED DOORSETS

**NO  
PLUG**

Where the doorset has not been manufactured in full by a company certified under the Q-Mark Fire Door manufacture scheme or is not to a specification listed on the Q-Mark manufacturer's fire door scope

of certification, the doorset cannot be fitted with silver, white or gold tree Q-Mark plugs or marked with a label that reproduces the design of the Q-Mark plug.

## Q-MARK CERTIFIED DOOR INSTALLATION (ALL DOORSET MATERIAL TYPES)



**GOLD**

Fitted within the appropriate outer plug to a door leaf to demonstrate that the doorset has been installed under the supervision of a Q-Mark Approved Installer. This is in addition to all other plugs previously fitted to the doorset.

This gold plug **MUST ONLY** be fitted to a Q-Mark certified (factory hung) fire doorset, identified as such by having one of the following plugs fitted to the door leaf:



**A SILVER TREE** (fire integrity only)



**A WHITE TREE** (fire integrity and smoke control).

If the door leaf has glazing fitted but an orange tree plug has not been fitted to the door leaf, or if integral sidelight/fanlight glazing is present but not all component parts/full installation instruction

were supplied then regardless of any other plugs fitted, the doorset cannot be confirmed as a Q-Mark certified manufactured doorset and the gold tree installation plug cannot be fitted.

Note: It is mandatory to fit a gold installation plug when the doorset is identified as being a complete Q-Mark approved doorset and has been fitted with a silver or white tree plug. It is not acceptable to just affix a gold installation label.

Whenever the installed doorset is included within a Record of Installation Activities (RIA), it must either have a gold plug or gold label affixed and specifically recorded as such on the RIA form.

Permission for any other use of the gold plug must first be obtained in writing from BM TRADA.

A gold installation label can be used in addition to the gold installation plug to a Q-Mark certified doorset if required. See below.

## Q-MARK FIRE DOOR INSTALLATION – LABEL OPTIONS (DOORSETS THAT CANNOT BE PLUGGED)



A gold Fire Door Installer label bearing the company's certificate number must be attached to any fire door leaf, fire door frame or fire doorset that is listed on the Record of Installation Activities form where the fitting of a gold installation plug is not applicable but the Installer is working under the Q-Mark scheme requirements.

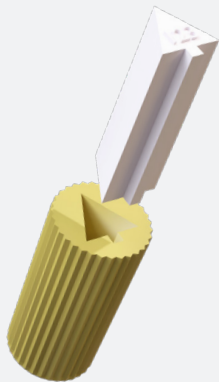
A gold installation label can be used in addition to the gold installation plug to a Q-Mark certified doorset if required.

Permission for any other use of the gold label must first be obtained in writing from BM TRADA.



Q-MARK FIRE DOOR PLUG IDENTIFICATION AND TRACEABILITY

NUMBER



The number embossed in the centre of the inner tree for all colors is the identification number for a Q-Mark certified fire door manufacturing company or Q-Mark certified

installation company. This maintains traceability to demonstrate which company was responsible for completing each part of the doorset manufacture, assembly and installation process.

ALPHA-NUMERIC CODES ARE USED FOR ALL CERTIFIED MANUFACTURERS/INSTALLERS ABOVE CERTIFICATE 999.

1000 to 1099 = Axx	1700 to 1799 = Hxx	2400 to 2499 = Pxx
1100 to 1199 = Bxx	1800 to 1899 = Jxx	2500 to 2599 = Qxx
1200 to 1299 = Cxx	1900 to 1999 = Kxx	2600 to 2699 = Rxx
1300 to 1399 = Dxx	2000 to 2099 = Lxx	2700 to 2799 = Sxx
1400 to 1499 = Exx	2100 to 2199 = Mxx	2800 to 2899 = Txx
1500 to 1599 = Fxx	2200 to 2299 = Nxx	2900 to 2999 = Uxx
1600 to 1699 = Gxx	2300 to 2399 = Oxx	3000 to 3099 = Vxx



Making tomorrow safer than today