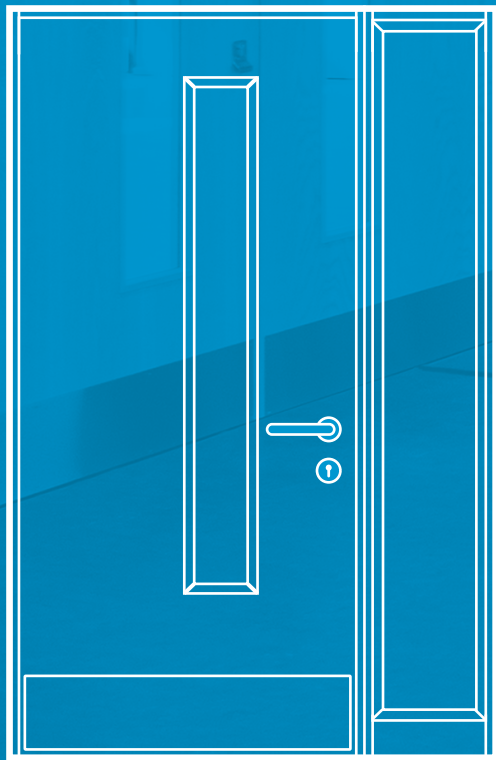


ahmarra
DOOR SOLUTIONS



QUICK SERVICE DOORS

A range of
rationalised doorsets,
designed to
streamline the order
process

Version 1.3 | 19-06-2024

Fire Door
Manufacture





Our Quick Service Doors are a rationalised range of pre-hung bespoke doorsets, suitable for projects of between 10 and 30 doors.

This brochure seeks to simplify the options, streamlining the process with materials stocked and ready to go. This range is designed to eliminate the usual RFI's so that your performance fire doorsets can be delivered with a reduced lead-time.

Follow the simple steps and complete the form at the back of the brochure by using the drop-downs to select the options code and email it to sales@ahmarra.co.uk for a fast-track quotation.

WHY SHOULD YOU CHOOSE AHMARRA?

QUALITY We use the finest materials, cutting edge technology and traditional craftsmanship to guarantee exceptional standards.

GREEN Ahmarra care about the environment, as such, we are FSC® certified and hold ISO 14001 certification for our environmental practices. Our wood waste is converted into heat for our production facility in our biomass boiler. Our local forest planting scheme has meant thousands of plants and trees have been planted as a result of our donations.

BRITISH Made in Britain to the highest quality standards, we are proud to fly the flag for UK manufacturing.

YOUR DOORSET WILL INCLUDE:

- Pre-hung doorset
Single doors will arrive fitted on its hinges and perfectly fitted into its frame.
Double doors will arrive with frame assembled but doors removed for manual handling purposes (unless door only ordered)
- Architrave and stops supplied loose
- Hinges, intumescent, drop seals (if acoustic or smoke controlled door) fitted at works
- Doors can also be supplied and morticed only for one of our lock cases, or flush bolts on double doors (if required)
- Plugged to confirm Q-Mark Fire Door Manufacture scheme certification
- Palletised and express delivered to your project
- Full set of installation instructions
- Ironmongery is not included (other than our tested hinges), but can be supplied separately upon request

BM TRADA Q-MARK CERTIFICATION

The Importance of Fire Doors and Third Party Certification

Fire doors save lives and protect property, so it is vital that they are manufactured and installed correctly, or their fire-resistance can be seriously compromised. Third party certification provides an additional level of assurance of both the level and consistency of performance.

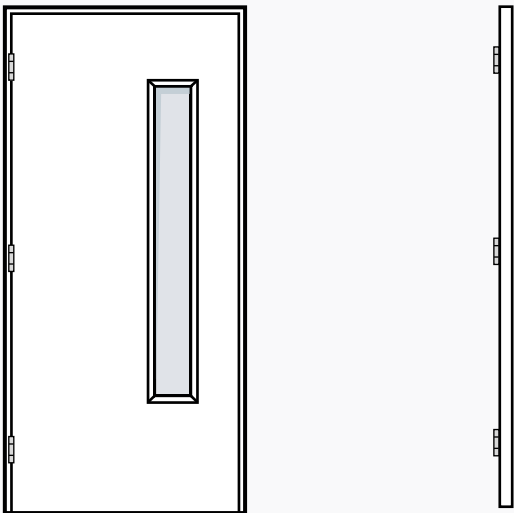
Q-Mark Fire Door Manufacturer Scheme

Ahmarra are proud to be certified members of this comprehensive third party certification scheme. Q-Mark has been designed to allow fire door manufacturers to demonstrate that their doors meet the standards required, and to provide ongoing reassurance that their product is fit for purpose. Performance, and production are regularly checked through audit testing and inspections.

QUICK SERVICE DOOR CONFIGURATIONS

Select the most appropriate door configuration for each structural opening.

SINGLE DOOR



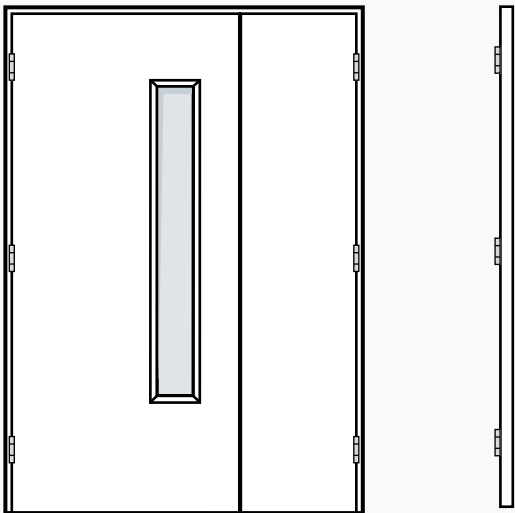
Fire Rating
 NFR FD 30 FD 60

Acoustic Rating Rw(dB)*
 NR 30 35

Specification
 Configuration: Single
 Vision Panel: Yes/No

Technical Details
 Door Core: SevereCore™

UNEQUAL PAIR OF DOORS



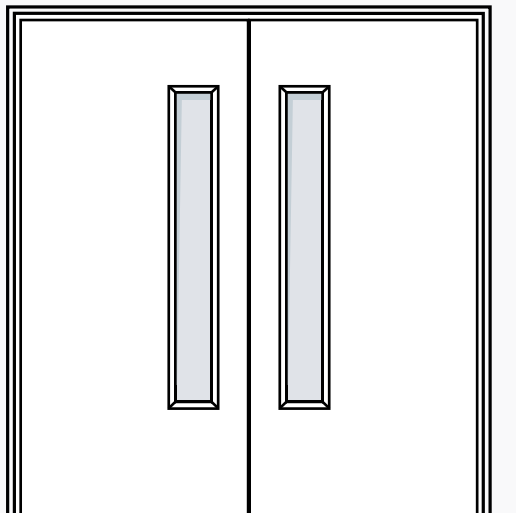
Fire Rating
 NFR FD 30 FD 60

Acoustic Rating Rw(dB)*
 NR 30 35

Specification
 Configuration: Unequal Pair
 Vision Panel: Yes/No

Technical Details
 Door Core: SevereCore™

DOUBLE DOORS



Fire Rating
 NFR FD 30 FD 60

Acoustic Rating Rw(dB)*
 NR 30 35

Specification
 Configuration: Double
 Vision Panel: Yes/No

Technical Details
 Door Core: SevereCore™



CODE 1: DOOR CONFIGURATION

SINGLE	UNEQUAL PAIR	EQUAL PAIR
S	U	E

CODE 2: FIRE RATING

NON-FIRE RATED	FD30	FD60	FD30 SMOKE CONTROL	FD60 SMOKE CONTROL
NFR	FD30	FD60	FD30/S	FD60/S

Ensure each door has the correct fire rating associated, NFR, FD30 or FD60. This should be derived from the building's fire strategy, by a professional.

FD30 and FD60 doors are also available with smoke control. Smoke controlled doors will have a drop seal fitted.

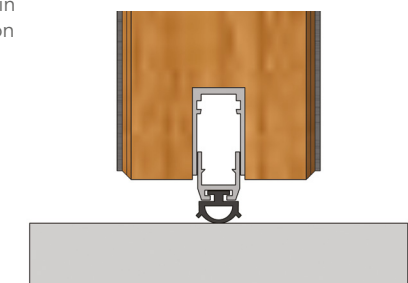
When doors only are ordered intumescent is not supplied, machined or fitted by Ahmarra.

CODE 3: ACOUSTIC RATING

NON-ACOUSTIC RATED	30 RwdB	35 RwdB
NR	30	35

If noise reduction is required, please select the appropriate acoustic rating.

All acoustically attenuated doors require a drop seal and will also be fitted to smoke controlled doors allowing an 8mm gap below your fire door which will be sealed when door is in closed position



Pre-Primed Veneer

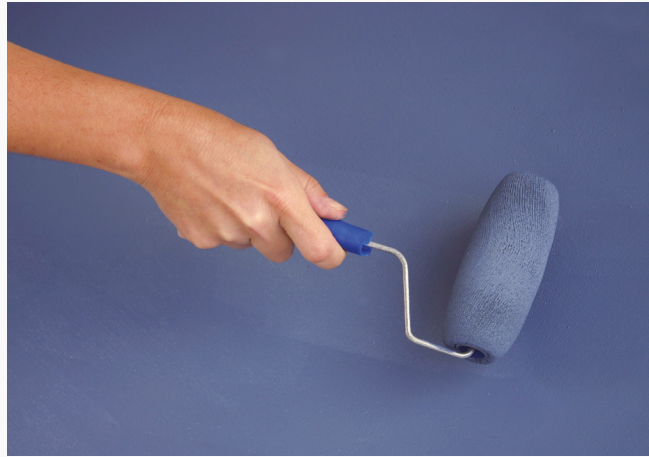
The pre-primed paper has been designed as a time saving initiative for paint grade doors and is ideal for concealing any lippings ensuring a smoother finish.

FACINGS & FINISHES

Frames will be pre-primed. Doors can either be primed for on-site painting or factory finished with high pressure laminate selected from the options below.

PRIMED ECO-VENEER

Ready Primed Eco-Veneer suitable for on-site painting.



Benefits

- Economic
- Surface damage can easily be fixed on-site
- Can be painted on-site to match the project's design scheme



HIGH PRESSURE LAMINATE

Ahmarra supply laminate from Polyrey®.



Benefits

- Highly resistant surface (impact, abrasion, stains, chemicals)
- Nonporous surface: easy to clean and resistant to disinfection protocols
- Antibacterial Sanitized® treatment as a standard, eliminates 99.9% of bacteria on the surface
- Volatile organic compounds (VOCs): Greenguard Gold Certified
- Suitable for high-traffic public environments



The laminate is available in 13 colour options. We keep stock of these standard colour options;

B117 FA Blanc Artic LRV 86.0	B070 FA Blanc Megève LRV 81.0	G029 FA Gris Tourterelle LRV 55.0	G003 FA Gris Perle LRV 40.0
G075 FA Gris Cendre LRV 32.0	G076 FA Gris Acier LRV 15.0	G059 FA Gris Orage LRV 9.0	N005 FA Noir LRV 6.0
B116 FA Beige Nature LRV 51.0	R062 FA Rouge Fatal LRV 15.0	B086 FA Bleu Caraïbes LRV 9.0	D018 FA Chêne de Meymac LRV 39.0
B100 FA Banian Blanchi LRV 37.0			

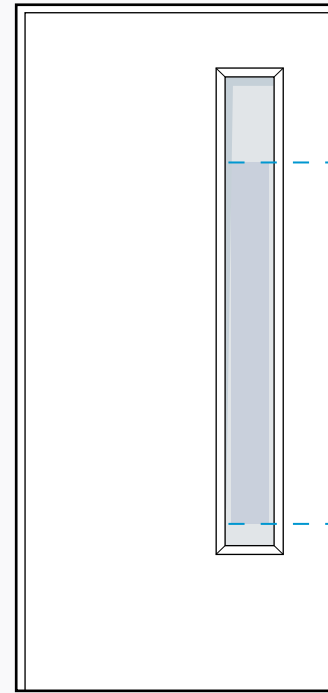
CODE 4: FACINGS & FINISHES

PRIMED ECO-VENEER	BLANC ARTIC	BLANC MEGÈVE	GRIS TOURTERELLE	GRIS PERLE	GRIS CENDRE	GRIS ACIER
PRIMED	B117	B070	G029	G003	G075	G076
GRIS ORAGE	NOIR	BEIGE NATURE	ROUGE FATAL	BLEU CARAÏBES	CHÊNE DE MEYMAC	BANIAN BLANCHI
G059	N005	B116	R062	B086	D018	B100

VISION PANEL

Standard vision panel style details, DDA compliant to BS 8300:2009.

VP01
Single narrow vision panel



Vision panels allow users of the building to view what is on the other side of the door and are an important safety feature, vital in preventing injury resulting from collision with opening doors.

BS 8300:2009
MINIMUM ZONE OF VISIBILITY

Fire Ratings



Technical Details

Aperture Width 200 mm
Aperture Height 1400 mm

CODE 5: VISION PANEL

Choose whether you would like your doors to feature a vision panel.

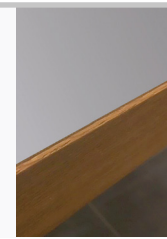
NO APERTURE	STANDARD VISION PANEL
None	VP01

LIPPINGS & GLAZING BEADS

Lippings

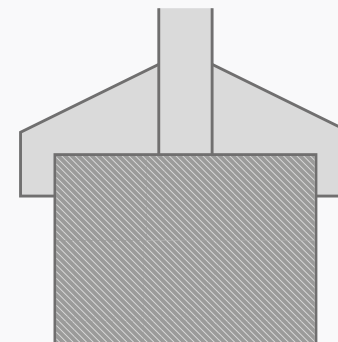
All doors from Ahmarra are lipped all around.

Laminate faced doors will be lipped in American White Oak (semi-concealed as shown).



Bolection Bead

Hardwood bolection bead (cloak bead) will also be in American White Oak, where laminate, to match the lippings. Pin fixed.



FRAMES & ARCHITRAVE

LINING WITH PLANTED DOOR STOPS (LNG)

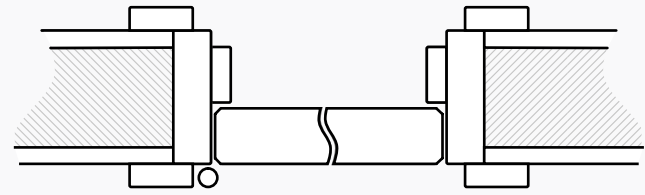
Our most popular frame type, suitable for most project types.

Frame finish is primed for on-site decoration.

Seals will always be white and can be painted over.

Technical Details

Min. Wall Depth	75 mm
Max. Wall Depth	250 mm
Fire Rating	NFR, FD30, FD60

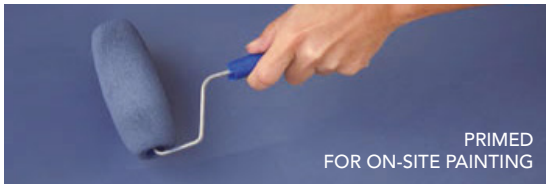
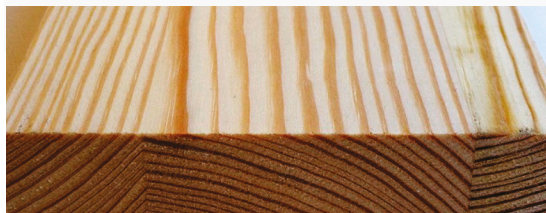


FRAME MATERIALS

Engineered Softwood (ESWD)

- Overall cost saving
- Natural timber defects eliminated
- Consistent material appearance
- Long term product stability

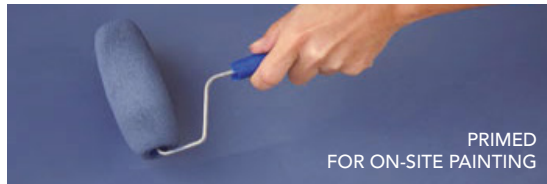
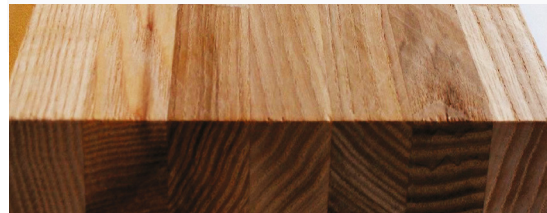
Density	>470Kg/M ³
Fire rating	NFR, FD30
Finish	Primed for on-site painting



Engineered Hardwood (EHWD)

- Overall cost saving
- Natural timber defects eliminated
- Consistent material appearance
- Long term product stability

Density	>650 Kg/M ³
Fire rating	FD60
Finish	Primed for on-site painting



ARCHITRAVE

Standard (44 x 18 mm) EDARC1



Ahmarra's standard architrave profile is 44 x 18 mm with 3mm radiused edges.

Extended (69 x 18 mm) EDARC2



Extended architraves (69 mm wide) may be necessary for refurbishment projects where structural openings may be inconsistent.

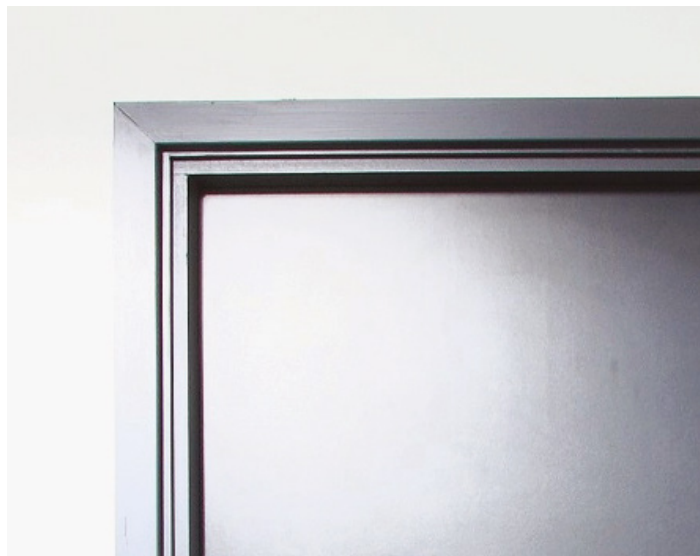
CODE 6: SIZES

For doors only, enter the door height and width in millimetres. For doorsets (doors pre-hung in frame), enter the structural opening height and width, plus the partition depth in millimetres.

DOOR SIZES	DOORSET SIZES
DOOR HEIGHT x DOOR WIDTH	STRUCTURAL OPENING HEIGHT x STRUCTURAL OPENING WIDTH x FRAME DEPTH + UNDERCUT

CODE 6: ARCHITRAVE

ARCHITRAVE SIZE OPTION 1	ARCHITRAVE SIZE OPTION 2	NONE
44mm	69mm	N/A



HINGES

In fire door applications, three hinges must be fitted to each door. Lift off hinge and butt hinge options are available.

Where door only, hinges can be supplied for on-site machining and fitting to align with existing frames.

CODE 7: HINGE

LIFT OFF HINGES	BUTT HINGES	NONE
LO	BT	N/A



LIFT OFF HINGES

Class 11
Supplied and fitted by Ahmarra



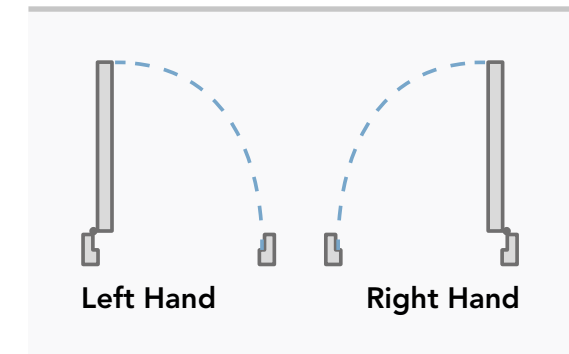
BUTT HINGES

SSS Class 13
Supplied and fitted by Ahmarra

HANDING

Be sure to select the correct handing for each doorset.

Standing on the non-hinge side (door opening away), if the door opens towards the right then it is a right handed door. If it opens towards the left it is a left handed door.



CODE 8: HANDING

LEFT HAND	RIGHT HAND	NONE
LH	RH	N/A

LOCK MORTICE

Ahmarra can mortice for our modular lock and flush bolt if required.

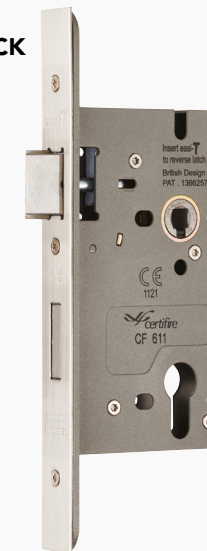
CODE 9: LOCK FLUSH BOLTS

LOCK MORTICE	FLUSH BOLTS RECESSED	LOCK & FLUSH BOLTS RECESSED	NONE
LM	FBR	L&FBR	N/A

Flush bolts will be edge mounted if required. Modular lock-body only will be factory morticed into the door edge and positioned so that when fitted on site, the lever handle sits at 900mm height.

Where door only, locks can be supplied for on-site machining and fitting.

SASHLOCK



FLUSH BOLT

2 x flush bolt recess



QUICK SERVICE DOORS ENQUIRY FORM

For a fast-track quotation, please send this completed form to sales@ahmarra.co.uk.

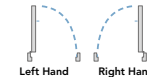
Or to discuss your requirements, call 02392 389 076.

Contact Name:	Tel No:	Project:
Company Name:	Email:	

DOOR ONLY

Door Number	1 Door Configuration	2 Fire Rating	3 Acoustic Rating	4 Facing/Finish	5 Vision Panel	6 Door Size Height (mm)	6 Door Size Width (mm)	Quantity

DOORSET (DOOR PRE-HUNG IN FRAME)



Doorset Number	1 Doorset Configuration	2 Fire Rating	3 Acoustic Rating	4 Facing/Finish	5 Vision Panel	6 Structural Opening Height (mm)	6 Structural Opening Width (mm)	6 Frame Depth (mm)	6 Undercut (mm)	6 Architrave (mm)	7 Hinges	8 Handing Ahmarra Convention	9 Lock	Quantity

ORDER PROCESS

Our QSD range reduces our current lead-time by two weeks by saving time at the front end through rapid quote generation, reduced RFI's and having materials in stock.

