

ahmarra

Fire Door Manufacture & Installation



**HIGH PRESSURE
LAMINATE
DOOR FACINGS**

Version 1.0 | 31-10-2024

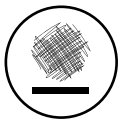
 **polyrey®**

HIGH PRESSURE LAMINATE, RESISTANT AND VERSATILE

A HIGH-PERFORMANCE SURFACE FOR EVERYDAY APPLICATIONS...



Resistant to:



Abrasion



Impacts



Scratches



Moisture



Chemicals



Artificial light



Easy to clean

...SUITABLE FOR ALL TYPES OF BUILDINGS, EVEN THE MOST DEMANDING

Suitable for public amenities in healthcare, hospitality, office work, education, etc., including those subject to intense use or regular disinfection up to several times a day.



Fire-retardant grade
available on request



IMO / MED certification
for **naval** projects

All Technical Data Sheets, Care and Maintenance Guides, Chemical Resistance Sheets and the Performance Comparison Sheet "The Right Surface Solution" are available on the Polyrey website.

HIGH PRESSURE LAMINATE IS RESISTANT AND VERSATILE

THE BEST CHOICE FOR YOUR DOORS

TYPE OF DOOR ADVANTAGES	PAINTED	HIGH PRESSURE LAMINATE	WOOD VENEER
Design	Plain colours	Plain colours - Woods - Materials	Woods
Homogeneity of the decor	•• (dependent upon the quality of the paint, skills of the workforce, etc.)	•••	•• (woods may contain natural defects and may vary from one door to another)
Impact resistance	•	•••	••
Ease of maintenance	•	•••	••
Resistance to artificial light	••	•••	•
Hygiene	-	Antibacterial - Non-porous surface	-
Fit-out	May cause constraints in occupied premises (drying time, smells, VOC emissions, etc.)	Easy	May cause constraints in occupied premises (drying time, smells, VOC emissions, etc.)
Price	•	••	•••

Level:

- Low
- Medium
- High

HIGH PRESSURE LAMINATE IS SUITABLE FOR HEALTHCARE ENVIRONMENTS



Cathedral Oak (C206)

SANITIZED®: YOUR ANTIBACTERIAL PROTECTION

The surface of our Polyrey HPL® laminates receives a Sanitized® antibacterial treatment.

- The Sanitized® treatment is based on an active biocidal substance Silver borophosphate glass.
- It is available for all Polyrey products at no additional cost and is not subject to minimum order quantities or extended delivery times.*
- Our certification is renewed annually following tests carried out by an independent laboratory.

ESSENTIAL FOR YOUR PROJECTS IN HEALTHCARE AND EDUCATION FACILITIES

80% OF BACTERIA are transmitted by hands and through contact with contaminated surfaces. Doors are therefore one of the places where bacteria most readily grow.

This poses a challenge for healthcare establishments and public amenities for the most vulnerable (schools, nurseries, etc.).

Our antibacterial Sanitized® protection, combined with regular cleaning of your Polyrey HPL® high pressure laminate doors, will help you maintain a healthy environment.



99.9%
bacteria reduction

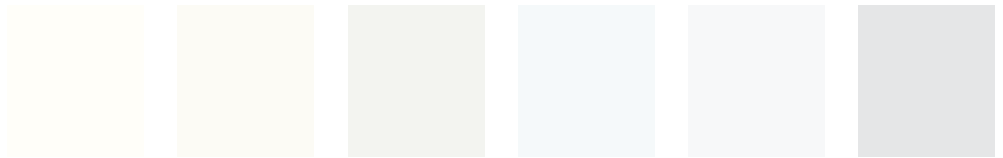
EFFICACY TESTED ON BACTERIA

According to JIS Z 2801:2010, including Escherichia coli, Salmonella enteritidis and Staphylococcus aureus.

*Excluding Touch finishes, which are inherently antibacterial and do not require Sanitized® treatment.

DECORS COLOUR CHART

plain colours



B068 FA Blanc Chamonix LRV 82.0
B070 FA - EXM Blanc Megève LRV 81.0
B015 FA Blanc Menuires LRV 84.0
B117 FA - EXM Blanc Artic LRV 86.0
B069 FA Blanc Courchevel LRV 78.0
G029 FA Gris Tourterelle LRV 55.0



G044 FA Gris Dauphin LRV 55.0
G003 FA Gris Perle LRV 40.0
G075 FA - EXM Gris Cendré LRV 32.0
G076 FA Gris Acier LRV 15.0
G059 FA Gris Orage LRV 9.0
P114 FA Poivre LRV 5.0
005 FA Noir Classique LRV 5.0
N005 FA Noir LRV 6.0



149 FA Gris Paloma LRV 55.0
G116 FA Gris Halo LRV 71.0
030 FA Blanco Especial LRV 83.0
0111 FA Orgeat LRV 79.0
C188 FA Crème de Lait LRV 83.0
E021 FA Écru LRV 77.0
C017 FA Coquille d'Œuf LRV 60.0
G012 FA Grès LRV 60.0



B116 FA Beige Nature LRV 51.0
S067 FA Seigle LRV 40.0
F026 FA - EXM Feutre LRV 52.0
G077 FA Galet LRV 37.0
B205 FA Beige Nude LRV 42.0
P001 FA Pierre de Lune LRV 19.0
F006 FA Fer LRV 18.0
G120 FA Gris Vison LRV 13.0



G031 FA Genêt LRV 57.0
J024 FA Jaune Sambra LRV 40.0
F001 FA Florida LRV 24.0
R062 FA Rouge Fatal LRV 15.0
R036 FA Rouge Cerise LRV 12.0
B120 FA Brique LRV 15.0
G024 FA Grenade LRV 11.0
F055 FA Figue LRV 8.0



P092 FA Pomme Verte LRV 50.0
V113 FA Vert Saugé LRV 33.0
E082 FA Épicéa LRV 19.0
V108 FA Vert Sarcelle LRV 12.0
V112 FA Vert des Vosges LRV 11.0
B206 FA Bleu Encre LRV 10.0
B086 FA Bleu Caraïbes LRV 9.0
B125 FA Bleu Pétrole LRV 8.0



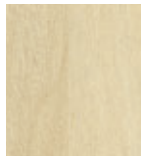
B048 FA Bleu Oslo LRV 52.0
B207 FA Bleu Poudré LRV 40.0
C118 FA Cèdre Bleu LRV 27.0
B196 FA Bleu Velvet LRV 13.0

DECORS COLOUR CHART

woods



B102 EXM
Bouleau de Sibérie
LRV 52.0



E105 FA
Érable Brunswick
LRV 53.0



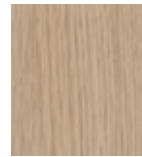
E009 FA
Érable Blanc
LRV 61.0



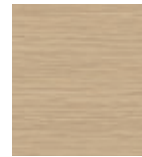
H028 SEV
Hêtre Bergen
LRV 53.0



F056 EXM
Frêne Scandinave
LRV 53.0



C098 FA
Chêne de Fil Naturel
LRV 45.0



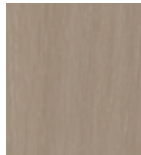
C102 EXM
Chêne Clair Horizontal
LRV 53.0



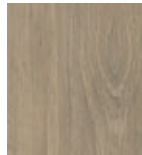
F061 SEV
Frêne Monreale
LRV 41.0



C180 SEV
Chêne Alba
LRV 48.0



C103 SEV
Chêne Lavé
LRV 38.0



C105 EXM
Chêne Québec
LRV 36.0



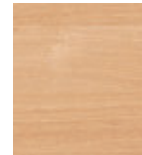
N112 EXM
Noyer d'Amérique
LRV 38.0



N113 SEV
Noyer Marbot
LRV 36.0



C203 EXM
Chêne Montorgueil
LRV 35.0



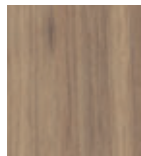
C204 EXM
Chêne Montorgueil
Horizontal LRV 35.0



D018 FA
Chêne de Meymac
LRV 39.0



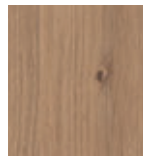
C182 EXM
Chêne Adrian
LRV 39.0



N056 EXM
Noisetier Naturel
LRV 32.0



C179 EXM
Chêne des Massifs
LRV 35.0



C133 SEV
Chêne Vendôme
LRV 37.0



H027 FA
Hêtre de Provence
LRV 40.0



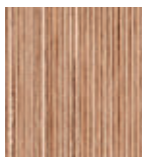
C206 EXM
Cathedral Oak
LRV 32.0



B208 EXM
Birnam Oak
LRV 26.0



O117 EXM
OSB Brut
LRV 47.0



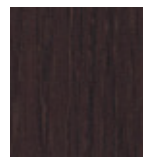
M122 EXM
Multipli Nature
LRV 42.0



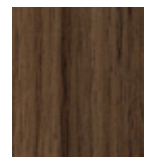
N024 EXM
Noyer Tropical
LRV 22.0



P136 EXM
Palissandre de Santos
LRV 13.0



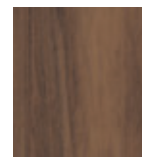
C047 FA
Chêne Wengé
LRV 9.0



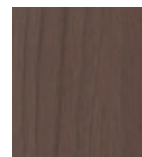
N117 EXM
Noyer Chesterfield
LRV 12.0



N122 ESA
Noyer Moka
LRV 14.0



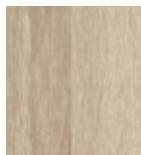
N057 EXM
Noisetier Brun
LRV 15.0



N026 EXM
Noyer Ombré
LRV 15.0



E103 EXM
Érable Féroé
LRV 67.0



C129 EXM
Chêne Bastide
LRV 45.0



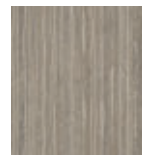
S040 FA
Cérusé Clair
LRV 55.0



C185 EXM
Chêne d'Australie
LRV 55.0



W009 EXM
Wengé Blanc Cérusé
LRV 45.0



B100 FA
Banian Bianchi
LRV 37.0



O116 SLK
Orme Élegant
LRV 44.0



L092 EXM
Lamella Clair
LRV 36.0



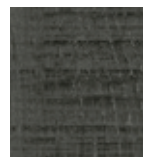
F012 EXM
Fruitier Cendré
LRV 25.0



C130 EXM
Chêne Topia
LRV 18.0



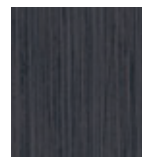
P135 FA
Pin de Nagoshi
LRV 9.0



C150 SEV
Chêne Brasero
LRV 10.0



W017 EXM
Wengé Poivre Cérusé
LRV 20.0

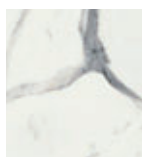


B101 FA
Banian Noirci
LRV 10.0

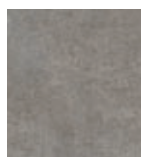


L093 EXM
Lamella Noisette
LRV 13.0

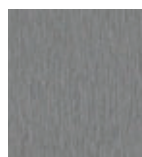
materials



M022 EXM
Marbre Veneto
LRV 62.0



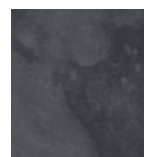
B134 EXM
Béton Griffé
LRV 25.0



B092 FA
Brossé Gris
LRV 29.0



T087 EXM
Textus Poivre
LRV 12.0



P120 EXM
Pierre de Lave
LRV 10.0

AVAILABILITY TABLE

Finishes

FA	Satin
EXM	Extramat
EPM	Epimat
SEV	Selva
ESA	Essencia
SLK	Silk
TCH	Touch 

Door facing

Complementary
interior design product

	POLYREY HPL®				PANOPREY®
	High Pressure Laminate				Melamine-Faced Board
Size / Format (cm)	215 x 97	245 x 124	307 x 124	307 x 132	280 x 207
Thickness (mm)	0.8 ⁽¹⁾ 2 - 3 - 4 (FA-EXM) ⁽²⁾				8 - 12 - 16 - 19 - 25 - 30
Grade	Standard Fire retardant				Standard Fire retardant <u>12-16-19 mm</u>

plain colours

Code	Decor	Finish					LRV	RAL	NCS	BS	PANTONE
005	Noir Classique	FA	•	•	•	•	0.05	9005	S 9000-N	00 E 53	Black C
030	Blanco Especial	FA	•	•	•	•	0.83	9016	S 0502-G50Y	00 E 55	9064 C
149	Gris Paloma	FA	•	•	•	•	0.55	7035	S 2000-N	00 A 03	413 C
B015	Blanc Menuires	FA	•	•	•	•	0.84	9016	S 0502-G50Y	00 E 55	9064 C
B048	Bleu Oslo	FA	•	•	•	•	0.52	-	S 1030-R80B	20 D 41 (D)	644 C
B068	Blanc Chamonix	FA	•	•	•	•	0.82	9016	S 0502-G	10 A 01 (D)	9064 C
B069	Blanc Courchevel	FA	•	•	•	•	0.78	9003	S 0505-R70B	22 C 31 (D)	9062 C
B070	Blanc Megève	FA	•	•	•	•	0.81	9016	S 0502-G50Y	10 A 01	9064 C
B070	Blanc Megève	EXM	•	•	•	•	0.81	9016	S 0502-G50Y	10 A 01	9064 C
B070	Blanc Megève	SLK	•	•	•	•	0.81	9016	S 0502-G50Y	10 A 01	9064 C
B070	Blanc Megève	EPM	•	•	•	•	0.81	9016	S 0502-G50Y	10 A 01	9064 C
B070	Blanc Megève	TCH	•	•	•	• ⁽⁴⁾	0.85	9016	S 0500 - N	00 E 55	-
B086	Bleu Caraïbes	FA	•	•	•	•	0.09	5002	S 4050-R80B	-	7687 C
B116	Beige Nature	FA	•	•	•	•	0.51	-	S 2005-Y50R	-	9223 C
B116	Beige Nature	SLK	•	•	•	•	0.51	-	S 2005-Y50R	-	9223 C
B116	Beige Nature	TCH	•	•	•	• ⁽⁴⁾	0.57	-	S 1505-Y50R	08 B 17	-
B117	Blanc Artic	FA	•	•	•	•	0.86	9003 (D)	S 0502-B	-	9062 C
B117	Blanc Artic	EXM	•	•	•	•	0.86	9003 (D)	S 0502-B	-	9062 C
B117	Blanc Artic	SLK	•	•	•	•	0.86	9003 (D)	S 0502-B	-	9062 C
B117	Blanc Artic	EPM	•	•	•	•	0.86	9003 (D)	S 0502-B	-	9062 C
B117	Blanc Artic	TCH	•	•	•	• ⁽⁴⁾	0.83	9003	S 0603-R80 B	-	-
B120	Brique	FA	•	•	•	•	0.15	8004 (L)	S 4040-Y80R	-	7600 C
B125	Bleu Pétrole	FA	•	•	•	•	0.08	-	S 5540-B10G	18 D 45 (L)	3035 C
B196	Bleu Velvet	FA	•	•	•	•	0.13	5000	S 5030-R80B	105	2161 C
B205	Beige Nude	FA	•	•	•	•	0.42	-	S 3010-Y60R	BS04B21	4735C
B206	Bleu Encre	FA	•	•	•	•	0.10	5008	S 8005-R80B	BS20C40	7546C
B207	Bleu Poudré	FA	•	•	•	•	0.40	-	S 3010-R80B	BS18C35	7543C
C017	Coquille d'Œuf	FA	•	•	•	•	0.60	1015 (D)	S 0907-Y30R	08 C 31	9180 C
C118	Cèdre Bleu	FA	•	•	•	•	0.27	5024 (L)	S 3030-B	-	5425 C
C188	Crème de Lait	FA	•	•	•	•	0.83	9003	S 0603-G40Y	10 B 15	Cool Gray 1 C
E021	Écru	FA	•	•	•	•	0.77	9001	S 0804-Y30R	-	9225 C
E082	Épicéa	FA	•	•	•	•	0.19	6011	S 4030-G30Y	-	7743 C
F001	Florida	FA	•	•	•	•	0.24	2010	S 0580-Y60R	06 E 55	1585 C
F006	Fer	FA	•	•	•	•	0.18	7005 (L)	S 6500-N	06 A 11	405 C

AVAILABILITY TABLE

Finishes

FA	Satin
EXM	Extramat
EPM	Epimat
SEV	Selva
ESA	Essencia
SLK	Silk
TCH	Touch 

Door facing

Complementary
interior design product

	POLYREY HPL®				PANOPREY®
	High Pressure Laminate				Melamine-Faced Board
Size / Format (cm)	215 x 97	245 x 124	307 x 124	307 x 132	280 x 207
Thickness (mm)	0.8 ⁽¹⁾ 2 - 3 - 4 (FA-EXM) ⁽²⁾				8 - 12 - 16 - 19 - 25 - 30
Grade	Standard Fire retardant				Standard Fire retardant <u>12-16-19 mm</u>

plain colours

Code	Decor	Finish					LRV	RAL	NCS	BS	PANTONE
F026	Feutre	FA	•	•	•	•	0.52	-	S 2005-Y50R	06 A 03 (L)	7535 C
F026	Feutre	EXM	•	•	•	•	0.52	-	S 2005-Y50R	06 A 03 (L)	7535 C
F026	Feutre	EPM	•	•	•	•	0.52	-	S 2005-Y50R	06 A 03 (L)	7535 C
F055	Figue	FA	•	•	•	•	0.08	-	S 5040-R50B	24 E 58 (D)	262 C
G003	Gris Perle	FA	•	•	•	•	0.40	7040	S 3005-R80B	18 B 19 (L)	421 C
G012	Grès	FA	•	•	•	•	0.60	1013 (D)	S 1505-Y20R	-	4545 C
G024	Grenade	FA	•	•	•	•	0.11	3011	S 4050-R	04 D 45 (L)	1815 C
G029	Gris Tourterelle	FA	•	•	•	•	0.55	7035	S 1502-B	-	427 C
G031	Genêt	FA	•	•	•	•	0.57	1003	S 0560-Y20R	-	143 C
G044	Gris Dauphin	FA	•	•	•	•	0.55	7047	S 2000-N	02 A 03 (L)	413 C
G059	Gris Orage	FA	•	•	•	•	0.09	7024	S 7502-B	00 A 13 (L)	7540 C
G075	Gris Cendré	FA	•	•	•	•	0.32	7004	S 4502-B	00 A 07	415 C
G075	Gris Cendré	EXM	•	•	•	•	0.32	7004	S 4502-B	00 A 07	415 C
G075	Gris Cendré	SLK	•	•	•	•	0.32	7004	S 4502-B	00 A 07	415 C
G075	Gris Cendré	EPM	•	•	•	•	0.32	7004	S 4502-B	00 A 07	415 C
G075	Gris Cendré	TCH	•	•	•	• ⁽⁴⁾	0.31	7004	S 4000 - N	00 A 07	7539 U
G076	Gris Acier	FA	•	•	•	•	0.15	7012	S 6502 - B	-	Cool Gray 11 C
G077	Galet	FA	•	•	•	•	0.37	-	S 4005-Y50R	-	7529 C
G116	Gris Halo	FA	•	•	•	•	0.71	7047	S 1002-G	02 A 03	Cool Gray 1 C
G120	Gris Vison	FA	•	•	•	•	0.13	7022	S 7005-Y20R	08 B 29	2335 C
J024	Jaune Sambra	FA	•	•	•	•	0.40	1032	S 2060-Y10R	08 E 56	7555 C
N005	Noir	FA	•	•	•	•	0.06	9005	S 9000-N	00 E 53	Black C
N005	Noir	SLK	•	•	•	•	0.06	9005	S 9000-N	00 E 53	Black C
N005	Noir	EPM	•	•	•	•	0.06	9005	S 9000-N	00 E 53	Black C
N005	Noir	TCH	•	•	•	• ⁽⁴⁾	0.04	7021	S 8500 N	18 A 14	Black 7C
O111	Orgeat	FA	•	•	•	•	0.79	9010	S 0603-G40Y	00 E 55	Cool Gray 1 C
P001	Pierre de Lune	FA	•	•	•	•	0.19	7006 (D)	S 5005-Y20R	08 B 23 (D)	7531 C
P092	Pomme Verte	FA	•	•	•	•	0.50	-	S 1060-G60Y	12 E 51	583 C
P114	Poivre	FA	•	•	•	•	0.05	7021 (D)	S 8500-N	18 A 14 (L)	447 C
P114	Poivre	SLK	•	•	•	•	0.05	7021 (D)	S 8500-N	18 A 14 (L)	447 C
P114	Poivre	TCH	•	•	•	• ⁽⁴⁾	0.08	7024	S 7502 B	00 A 13	433 U
R036	Rouge Cerise	FA	•	•	•	•	0.12	3001	S 2570-Y90R	-	187 C
R062	Rouge Fatal	FA	•	•	•	•	0.15	3000	S 1580-Y90R	04 E 56	7620 C
S067	Seigle	FA	•	•	•	•	0.40	-	S 3005-Y20R	-	7536 C
V108	Vert Sarcelle	FA	•	•	•	•	0.12	6004	S 6030-B70G	16 C 39	5477 C
V112	Vert des Vosges	FA	•	•	•	•	0.11	6012	S 8005-B80G	BS16C40	446C
V113	Vert Sauge	FA	•	•	•	•	0.33	-	S 4010-G30Y	BS6066	5635C

For more details, please refer to our product Data Sheets.

To help you coordinate our plain decors with other decorative materials, the above table shows the NCS® - RAL® - BS® - Pantone® and IRL codes for each decor. These codes are given as an indication only. The shades of Polyrey's decors may vary slightly with regard to the RAL® and BS® colour charts: L = light / D = dark

AVAILABILITY TABLE

Finishes

FA	Satin
EXM	Extrammat
EPM	Epimat
SEV	Selva
ESA	Essencia
SLK	Silk
TCH	Touch

Door facing

Complementary interior design product

	POLYREY HPL®				PANOPREY®
	High Pressure Laminate				Melamine-Faced Board
Size (cm)	215 x 97	245 x 124	307 x 124	307 x 132	280 x 207
Thickness (mm)	0.8 ⁽¹⁾ 2 - 3 - 4 (FA-EXM) ⁽²⁾				8 - 12 - 16 - 19 - 25 - 30
Grade	Standard Fire retardant				Standard Fire retardant 12-16-19 mm

All the decors in the door range are also available in **Reysipur® Compact HPL**. See the **infoGuide**.



woods

Code	Decor	Finish					Species of wood	LRV
B100	Banian Blanchi	FA	•	•	•	•	Exotic / Exotique	0.37
B100	Banian Blanchi	EPM	•	•	•	•	Exotic / Exotique	0.37
B101	Banian Noirci	FA	•	•	•	•	Exotic / Exotique	0.10
B101	Banian Noirci	EPM	•	•	•	•	Exotic / Exotique	0.10
B102	Bouleau de Sibérie	EXM	•	•	•	•	Birch / Bouleau	0.52
B208	Birnam Oak	EXM	•	•	•	•	Oak / Chêne	0.26
C047	Chêne Wengé	FA	•	•	•	•	Oak / Chêne	0.09
C098	Chêne de Fil Naturel	FA	•	•	•	•	Oak / Chêne	0.45
C098	Chêne de Fil Naturel	EPM	•	•	•	•	Oak / Chêne	0.45
C102	Chêne Clair Horizontal	EXM	•	•	•	•	Oak / Chêne	0.53
C103	Chêne Lavé	SEV	•	•	•	•	Oak / Chêne	0.38
C105	Chêne Québec	EXM	•	•	•	•	Oak / Chêne	0.36
C105	Chêne Québec	ESA	•	•	•	•	Oak / Chêne	0.36
C129	Chêne Bastide	EXM	•	•	•	•	Oak / Chêne	0.45
C129	Chêne Bastide	ESA	•	•	•	•	Oak / Chêne	0.45
C130	Chêne Topia	EXM	•	•	•	•	Oak / Chêne	0.18
C133	Chêne Vendôme	SEV	•	•	•	•	Oak / Chêne	0.37
C133	Chêne Vendôme	ESA	•	•	•	•	Oak / Chêne	0.37
C150	Chêne Brasero	SEV	•	•	•	•	Oak / Chêne	0.10
C179	Chêne des Massifs	EXM	•	•	•	•	Oak / Chêne	0.35
C179	Chêne des Massifs	ESA	•	•	•	•	Oak / Chêne	0.35
C180	Chêne Alba	SEV	•	•	•	•	Oak / Chêne	0.48
C182	Chêne Adrian	EXM	•	•	•	•	Oak / Chêne	0.39
C182	Chêne Adrian	ESA	•	•	•	•	Oak / Chêne	0.39
C185	Chêne d'Australie	EXM	•	•	•	•	Oak / Chêne	0.55
C201	Chêne des Tourbières	TCH	•	•	• ⁽⁴⁾	• ⁽³⁾	Oak / Chêne	0.05
C202	Chêne Zermatt	ESA	•	•	•	•	Oak / Chêne	0.24
C203	Chêne Montorgueil	EXM	•	•	•	•	Oak / Chêne	0.35
C204	Chêne Montorgueil Horizontal ⁽⁵⁾	EXM	•	•	•	•	Oak / Chêne	0.35
C206	Cathedral Oak	EXM	•	•	•	•	Oak / Chêne	0.32
D018	Chêne de Meymac	FA	•	•	•	•	Oak / Chêne	0.39
E009	Érable Blanc	FA	•	•	•	•	Maple / Erable	0.61
E103	Érable Féroé	EXM	•	•	•	•	Maple / Erable	0.67
E105	Érable Brunswick	FA	•	•	•	•	Maple / Erable	0.53

notes

- (1) 0.9 mm for fire retardant Touch high pressure laminate
- (2) Extra-thick laminate is available in FA or EXM if the decor is available in FA or EXM in 0.8 mm laminate
- (3) Acrylic panel
- (4) Touch finish for size 305 x 132 cm
- (5) The shade and depth of horizontal and vertical decors of the same type may vary slightly

Decors may vary slightly in appearance across different products. These differences are an inherent part of the production process and are not a defect.

* LRV: Light Reflectance Value

AVAILABILITY TABLE

Finishes

FA	Satin
EXM	Extrammat
EPM	Epimat
SEV	Selva
ESA	Essencia
SLK	Silk
TCH	Touch

	Door facing				Complementary interior design product
	POLYREY HPL®				PANOPREY®
	High Pressure Laminate				Melamine-Faced Board
Size (cm)	215 x 97	245 x 124	307 x 124	307 x 132	280 x 207
Thickness (mm)	0.8 ⁽¹⁾ 2 - 3 - 4 (FA-EXM) ⁽²⁾				8 - 12 - 16 - 19 - 25 - 30
Grade	Standard Fire retardant				Standard Fire retardant <u>12-16-19 mm</u>

woods

Code	Decor	Finish					Species of wood	LRV
F012	Fruitier Cendré	EXM	•	•	•	•	Fruit tree / Fruitier	0.25
F056	Frêne Scandinave	EXM	•	•	•	•	Ash / Frêne	0.53
F061	Frêne Monreale	SEV	•	•	•	•	Ash / Frêne	0.41
H027	Hêtre de Provence	FA	•	•	•	•	Beech / Hêtre	0.40
H028	Hêtre Bergen	SEV	•	•	•	•	Beech / Hêtre	0.53
L092	Lamella Clair	EXM	•	•	•	•	Exotic / Exotique	0.36
L093	Lamella Noisette	EXM	•	•	•	•	Exotic / Exotique	0.13
M122	Multiplis Nature	EXM	•	•	•	•	Exotic / Exotique	0.42
N024	Noyer Tropical	EXM	•	•	•	•	Walnut / Noyer	0.22
N026	Noyer Ombré	EXM	•	•	•	•	Walnut / Noyer	0.15
N056	Noisetier Naturel	EXM	•	•	•	•	Walnut / Noyer	0.32
N057	Noisetier Brun	EXM	•	•	•	•	Walnut / Noyer	0.15
N112	Noyer d'Amérique	EXM	•	•	•	•	Walnut / Noyer	0.38
N113	Noyer Marbot	SEV	•	•	•	•	Walnut / Noyer	0.36
N117	Noyer Chesterfield	EXM	•	•	•	•	Walnut / Noyer	0.12
N122	Noyer Moka	ESA	•	•	•	•	Walnut / Noyer	0.14
O116	Orme Éléphant	SLK	•	•	•	• ⁽⁴⁾	Elm / Orme	0.44
O117	OSB Brut	EXM	•	•	•	•	OSB	0.47
P135	Pin de Nagoshi	FA	•	•	•	•	Pine / Pin	0.09
P135	Pin de Nagoshi	ESA	•	•	•	•	Pine / Pin	0.09
P136	Palissandre de Santos	EXM	•	•	•	•	Exotic / Exotique	0.13
S040	Cérusé Clair	FA	•	•	•	•	Oak / Chêne	0.55
W009	Wengé Blanc Cérusé	EXM	•	•	•	•	Exotic / Exotique	0.45
W009	Wengé Blanc Cérusé	EPM	•	•	•	•	Exotic / Exotique	0.45
W017	Wengé Poivre Cérusé	EXM	•	•	•	•	Exotic / Exotique	0.20
W017	Wengé Poivre Cérusé	EPM	•	•	•	•	Exotic / Exotique	0.20

materials

B092	Brossé Gris	FA	•	•	•	•		0.29
B134	Béton Griffé	EXM	•	•	•	•		0.25
M022	Marbre Veneto	EXM	•	•	•	•		0.62
P120	Pierre de Lave	EXM	•	•	•	•		0.10
T087	Textus Poivre	EXM	•	•	•	•		0.12

For more details, please refer to our product Data Sheets.



COORDINATED FRAMES FOR A FLAWLESS FINISH

Would you like to coordinate your door frames with our high pressure laminate decors? We work with partners who offer products to meet your needs. Contact us for more details.