

---

---

AIL

AHMARRA INSTALLATIONS

SPECIALIST JOINERY AND  
INSTALLATION SERVICE

---

---

# AHMARRA INSTALLATIONS



Apex City of Bath Hotel

A highly skilled and experienced specialist joinery contractor concentrating on luxury hotels, apartments and commercial projects, covering London and the South East.

## OUR SERVICE INCLUDES:

- Cost Value Engineering
- Project management
- Manufacture
- Installation

## OUR EXPERTISE EXTENDS TO:

- Full reception areas
- Wall-panelling
- Cabinet joinery
- Interior doors
- Vanity units
- Veneered and laminate cubicles
- Timber flooring
- Bespoke joinery products
- Ironmongery
- Glazed screens
- Glass and mirrors



WIMBLEDON TENNIS CLUB



THE ROYAL ALBERT HALL



THE LONDON GUILDHALL



ANCHORAGE PLACE ATRIUM



THE HOME OFFICE LONDON



ALPHABETA OFFICE BUILDING,  
LONDON



## OUR PROJECTS:

### WHAT WE DO

Ahmarra Installations Ltd is a specialist, highly skilled and experienced joinery contractor, concentrating on luxury hotels, apartments and commercial projects.

We work closely with contractors, designers and architects to provide a complete service for your design specification support, manufacture and installation requirements.

The dedicated team of highly-skilled, highly-motivated project managers, site supervisors, skilled joiners and carpenters are used to working within tight budgets and deadlines and our ability to provide a significant, reliable and flexible service to our clients, is significant of having successfully completed many high-profile construction projects in the UK for over 30 years, with many returning clients.

### A CLIENT FOCUSED APPROACH

As a company we remain completely focused on providing excellent customer service prior, during and after completion of your project. We do this through our tried and trusted management team, first rate procedures and supply chain collaboration which ensures projects are delivered to clients' expectations. We build long term relationships with our clients because we take the time to understand their needs and we treat every job as our passport to future business.

### EXCLUSIVE HOTELS

#### 5 Star Hotels

InterContinental Hotel, Park Lane  
 ME Hotel for Sol Melia  
 Metropolitan Hotel, Park Lane  
 The Churchill Hyatt Regency  
 Four Seasons Canary Wharf  
 The Hempel Hotel  
 Royal Garden Hotel Kensington

#### 4 Star Hotels

Apex City of Bath  
 Apex Temple Court  
 Apex City of London  
 Apex London Wall  
 Coworth Park - The Spa  
 Crowne Plaza, Shoreditch  
 Hilton London Paddington Hotel  
 Marriott, Park Lane  
 Cumberland Hotel  
 Hilton, London Gatwick

### COMMERCIAL

NatWest Bank, No 1 Princes Street  
 Nations House, Wigmore Street  
 Ace Global, Leadenhall Street  
 De Vere Business Centres  
 West One and Canary Wharf, London  
 House of Dior, Mayfair

### SPECIALIST AND HERITAGE BUILDINGS

Guildhall, City of London  
 Royal Albert Hall  
 Tate Modern  
 The Royal Exchange  
 The Home Office  
 Royal Navy Dockyards

### EDUCATION

Royal College of General Practitioners  
 The London School of Economics  
 Whitgift School  
 Hamble Sports College  
 University of Reading, The Cotton Club  
 Ashdown Technology College  
 The Bourne Academy  
 The Bishop of Winchester Academy  
 Parkview Academy  
 Gladesmore Community School

### LUXURY HOMES

The Penthouse, St George Wharf  
 Luxury Apartments, Westferry Road  
 Luxury Apartments, Chelsea

# ALPHABETA OFFICE BUILDING, LONDON

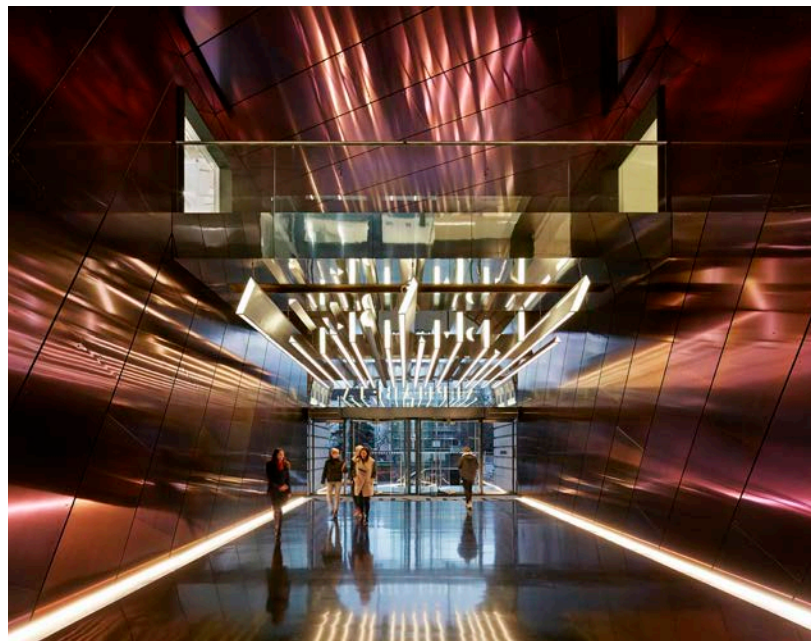
Contractor: Galliford Try plc  
Type of works: Reception Fit out

The refurbishment of the historic Triton Court office block on Finsbury Square has transformed the building into a major new creative workspace. The development, which is set over nine storeys and 20,000 m2 of usable space, provides a dynamic 9-storey glazed atrium, communal roof-terrace and 'ride-in' cycle ramp.

Ahmarra Installations undertook highly bespoke reception works including one of London's largest timber reception desks, wall panelling and timber cladding, mirror steel and glass walls, internal doors and ironmongery and joinery.

The striking design includes a purple stainless hall entrance into the 9-storey atrium. The atrium walls are clad in combination of timber, steel and projecting glass planes. A series of cantilevered glazed meeting rooms project into the atrium at various levels, creating an exciting vertical section towards the vast glazed roof light. Office space at high levels open onto furnished roof terraces that offer impressive views over the City.

Photography Hufton + Crow



## 77 SHAFTESBURY AVENUE, LONDON

---

---

Contractor: Tolent Construction

Type of works: Lead joinery and finishing sub-contractor for commercial offices

Ahmarra Installations have completed work for Tolent Construction on the extensive commercial development of a seven story office building on Shaftesbury Avenue in London's West End to a Category A quality office fit out.

Ahmarra's fit out involved the reception area including installing wall panelling, a bespoke timber and metal reception desk and bespoke oak ceiling battens which were also fitted to the walls of the atrium over 6 levels. The toilet core fit out included cabinets, cubicles and vanity units. Timber fire rated doorsets, ironmongery, skirtings and window boards throughout the development.

The project was a full design and build package with Ahmarra responsible for the procurement and installation. We worked closely with the Architect and the site team in finalising the intricate detailing and the co-ordination of other works using their expertise in driving solutions for some challenging issues that are typical of a building refurbishment.

---

---



## JOINERY FIT-OUT FOR THE AELTC AT WIMBLEDON TENNIS CLUB

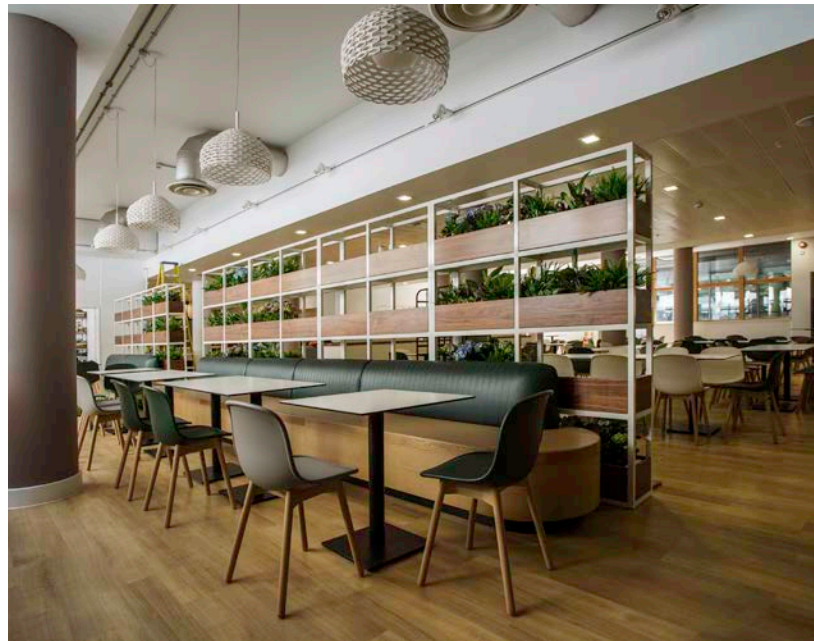
Client: AELTC

Type of work: Joinery fit-out

A series of orders were secured with the AELTC (All English Lawn Tennis Club) in which Ahmarra's skilled joiners worked to tight deadlines to deliver the scheme in time for the Championships, whilst ensuring the promised high quality levels of finish and design.

Ahmarra Installations undertook work in the Aorangi Pavilion, Millennium Building and the new areas underneath Courts 14 and 15, which houses the 24-hour media restaurant, a bespoke working area for some 250 photographers as well as new accommodation for the ball boys and girls. This order forms part of AELTC's Master Plan for the Club and The Championships which includes the construction of a new retractable roof over No.1 Court.

The highly bespoke works included press, writers and radio desks, dressing room benches, player support desk, wall planter system, counter tops, roller shutter cupboards, shelf units, vanity units, changing cubicles, lecterns and internal fire doors.



# APEX TEMPLE COURT HOTEL

Architect: Ian Springford Architects

Client: Apex Hotels

Contractor: Tolent Construction

Type of works: Installation of doorsets and architectural joinery

Situated just off Fleet Street, this landmark Apex Hotel has been converted from one of London's Inn of Courts into a four star contemporary hotel, with 184 bedrooms, together with restaurant, bar and conference facilities.

Works consisted of supplying and fitting numerous elements including doors for bedrooms and suites, luxury vanity units, bedheads, wardrobes and solid wood flooring in all bedrooms. In addition Ahmarra fitted out the highly bespoke reception area with wood panelling, coloured and etched glass feature screens, and wood flooring.



# ANCHORAGE HOUSE

---

---

Contractor: Galliford Try  
Client: Studio RHE  
Type of works: Atrium facade joinery installation

Ahmarra Installations have completed a 10-storey atrium for Anchorage House, a striking new office project in London's East India Dock for Galliford Try Construction.

The project has transformed an outdated and tired office block into a modern working space. Their work involved the installation of a large section spruce timbers within a new Glulam beam structure which has been erected within the existing building Atrium.

Large glass panels (4.2m x 3.3m) and purpose made metal balustrades were installed to each of the "cells" created by the new structure.

The atrium features multiple balconies, with timber frames that cantilever into the central space. Light floods in from above, thanks to a large skylight overhead.

Looking into the atrium are 22,200 square metres of flexible office space that is aimed at creative companies.

---

---



## INTERCONTINENTAL HOTEL, LONDON PARK LANE

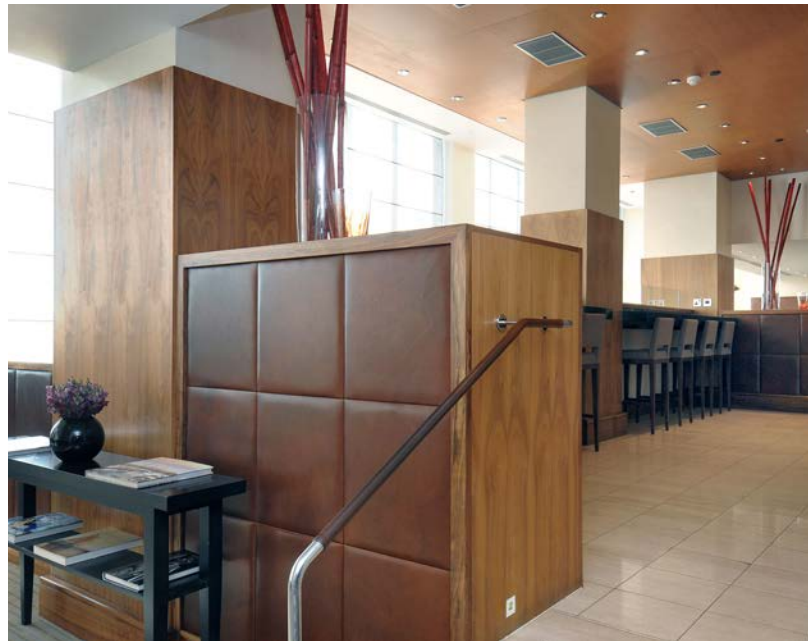
Contractor: John Sisk

Type of works: Supply and install doorsets, wardrobes and architectural joinery

Ahmarra supplied and fitted in excess of 900 high quality timber door sets and bespoke joinery as part of a major refurbishment at the prestigious Hotel Inter-Continental. This landmark 5-star hotel is prominently located on Hyde Park Corner.

The contract was awarded by the main contractor, John Sisk. It consisted of supplying and fitting numerous elements including doors for standard rooms, superior rooms and suites in Cherry, Walnut and Maple veneers.

In addition to various types of doors, Ahmarra also provided luxury vanity units with marble tops, wardrobes, boxed skirting and boxed window surrounds as well as skirting to corridors on eight levels of the hotel.



# APEX CITY OF BATH HOTEL

Architect: Ian Springford Architects

Client: Apex Hotels

Contractor: Tolent Construction

Type of works: Installation of doorsets and architectural joinery

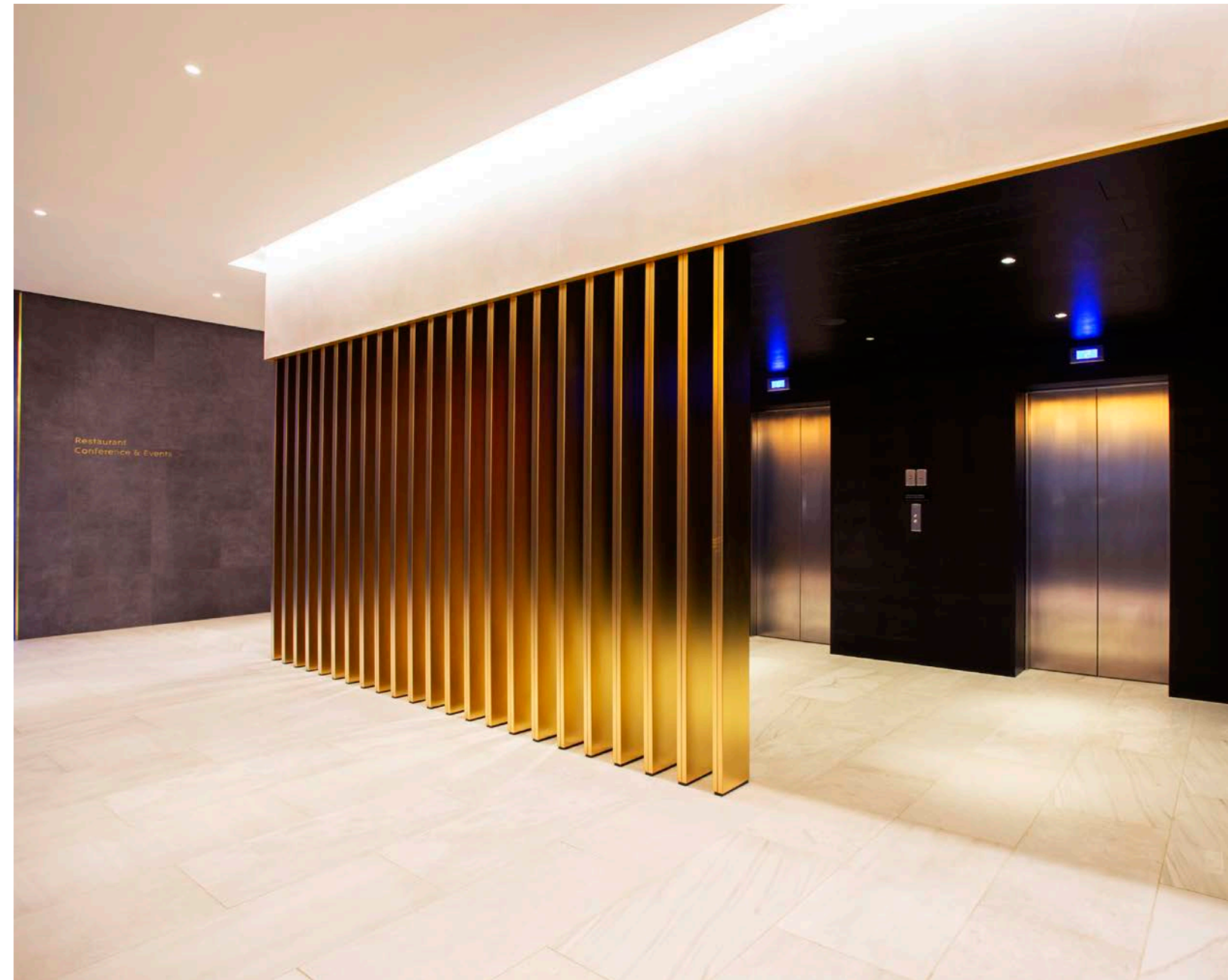
Apex secured this rare site in the centre of Bath to develop a new 178 bedroom hotel with extensive conference and leisure facilities. The project involved demolishing an existing 1960's office building and replacing it with a lower building more in keeping with the surrounding townscape.

The Apex City of Bath Hotel is situated just a five-minute walk from the Thermae Bath Spa. The hotel is Bath's largest hotel both in terms of conference and events spaces and number of bedrooms.

Ahmarra's fit out contract encompassed: -

Bedroom level doorsets, ironmongery, corridor panelling, wardrobes, bedheads, mirrored vanity units, bath panels, timber flooring, bedroom mirrors, skirtings and window boards.

Reception level doorsets, ironmongery, timber boarded doors and walls, timber flooring, auditorium acoustic panelling, bespoke metals screens, a variety of reception desks, front and rear bars, mirrored vanity units, timber and glass toilet cubicles, perch bars and banquet seating.



# THE LONDON GUILDHALL

Architect/Designer: W S Atkins  
Contractor: John Mowlem and Company plc  
Type of works: Supply and install architectural grade doorsets, restoration works to existing doors, panelling and marquetry architrave

Situated in the heart of the City of London, Guildhall has been the City powerhouse since the twelfth century, and is associated with both Sir Christopher Wren and Sir Horace Jones. Today, 800 years on, the medieval landmark acts as a grand setting for glittering banquets in honour of visiting Heads of State and other dignitaries, royal occasions, and receptions for major historical anniversaries.

This prestigious project offered a rare opportunity to work on a magnificent medieval Grade 1 listed landmark.

Ahmarra supplied and installed architectural grade new doorsets, curved doorsets, restoration works to existing doors, veneered panelling, and associated joinery. The ability to address a number of specialised requirements and craftsmanship was recognised, and the quality of design and finish was enhanced by the use of the marquetry.



## APEX LONDON WALL HOTEL

Architect: Ian Springford Architects

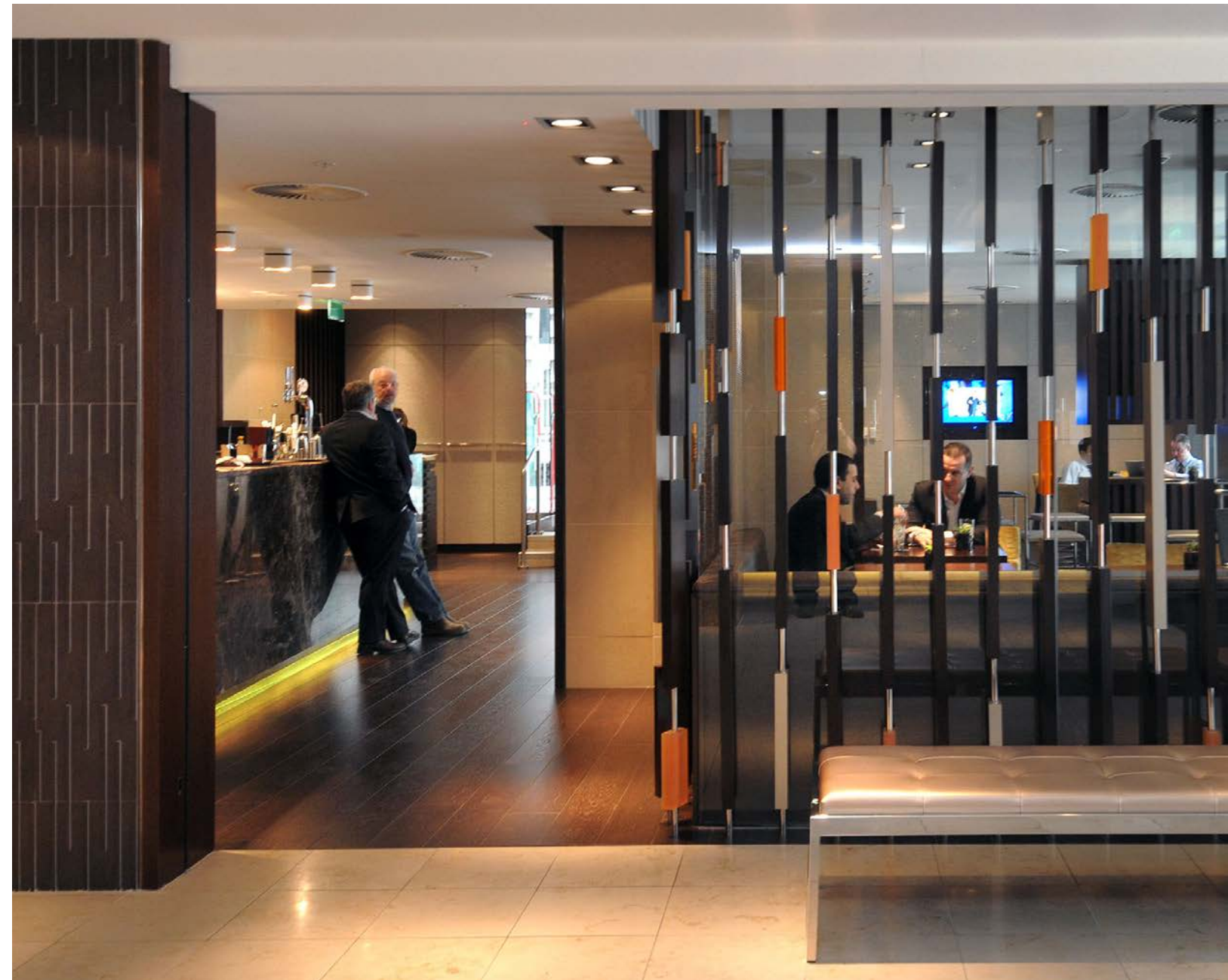
Client: Apex Hotels

Contractor: Tolent Construction

Type of works: Doorsets and architectural joinery

The Apex London Wall Hotel is a deluxe four-star property with 89 spacious bedrooms and suites, located in the heart of the city.

Ahmarra Installations completed the contract for the supply and installation of guestroom, corridor and reception area doorsets and joinery. Within this contract, Ahmarra also installed solid wood flooring, walnut bedheads, bespoke wardrobes in the bedrooms as well as corridor wall panelling, reception area desk, 'block' feature screens and fitted leather seating in the restaurant.





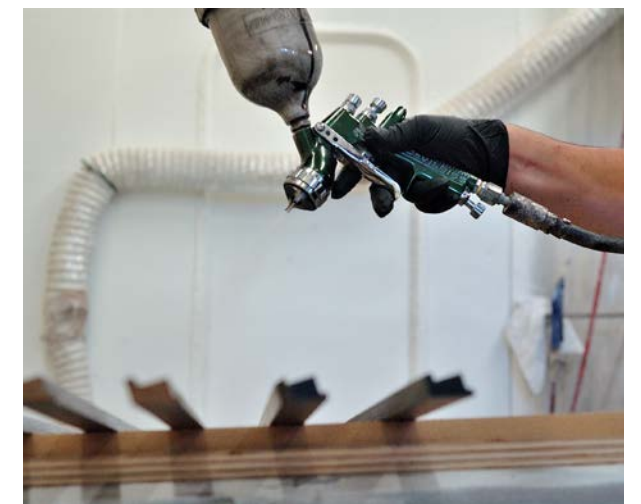
## CERTIFICATIONS AND ACCREDITATIONS

We have undergone comprehensive audits and rigorous reviews of our Health & Safety, Environmental and Quality practices and procedures in order to achieve the following:



## SPECIALIST FIRE DOOR MANUFACTURING FACILITY

We offer significant UK based manufacturing capabilities in partnership with Ahmarra Door Solutions Ltd and this relationship enables us to provide a flexible, bespoke service to our clients.



## FREE ADVICE & SAMPLE SERVICE

Our experienced team are happy to offer you expert advice and veneer samples if required, please contact us at:

phone: 02392 389 076  
email: sales@ahmarra.co.uk  
website: www.ahmarrainstallations.co.uk

Brochure Version: 2.3  
Date: 02-06-2026

Ahmarra Installations  
Unit 2 Hermitage Park  
Harts Farm Way  
Havant  
Hampshire  
PO9 1FA