

MERCANTILE  
RANGE

MADE TO ORDER BY  
**ahmarra**



## WHY SHOULD YOU CHOOSE AHMARRA?

- QUALITY** We use the finest materials, cutting edge technology and traditional craftsmanship to guarantee exceptional standards.
- BESPOKE** You select the style, the material, and the finish from a wide range of options, creating the perfect look with limitless possibilities.
- GREEN** Ahmarra are FSC® certified and hold ISO 14001 certification for our environmental practices.
- BRITISH** Made in Britain to the highest quality standards, our range includes both traditional and contemporary styles to perfectly complement your surroundings, we are proud to fly the flag for UK manufacturing.
- ASSURANCE** Our doorsets are third party certified under the Q-Mark Timber Fire Door Manufacture scheme. This comprehensive certification for timber fire doors ensures that performance, production and installation continue to be regularly checked through audit testing and inspections.

## MERCANTILE RANGE

**Our experience manufacturing performance doorsets for commercial projects has inspired us to develop this robust range of doors that particularly suit areas of heavy footfall such as office buildings, shopping centres and airports.**

Our doorsets are made to order on a project by project basis and we focus on providing our customers with the quality of service that we should all expect from our suppliers. Our ability to provide this level of service ensures that our customers return time and time again.

Our aim is to make the entire process as simple and practical as possible, offering solutions to the challenges presented by Building Regulations including performance requirements and complex design issues.

As a specialist in developing customer specific rationalised door sets, our clients have recognised that significant cost savings can be made by offering a uniform finish throughout and eliminating the need to re-define doorsets & ironmongery for every project.

Ahmarra are Q-Mark Timber Fire Door Manufacture, Q-Mark Fire Door Installation, Q-Mark Enhanced Security Door (PAS24), Secured By Design, ISO 9001 Quality Management System, ISO 14001 Environmental Management System, ISO 14064 Carbon Footprint and FSC® (Forest Stewardship Council®) certified. Our ability to offer full product certification has enabled us to meet the supply chain criteria for many of the UK's largest construction companies.

We are a family business that prides itself on offering a quality product and developing long-term relationships with our clients, suppliers and staff. Every team member understands that being polite, enthusiastic and reliable are essential components of what makes Ahmarra successful.





## FIRE RATED DOORSETS FOR UK AIRPORTS

Since 2006, we have supplied and fitted approximately 4,000 fire-rated doorsets at UK airports, predominantly at Heathrow and Gatwick.

### Offering Intelligent Advice

As experts in architectural doorset development, manufacture and installation, our experience means we really do understand doorsets. We offer intelligent advice on how to make this process cost effective, simplifying what can be a very complex issue.



## FIRE RATED DOORSETS FOR COMMERCIAL PROJECTS

We have a wide range of commercial experience, which includes banks, offices, retail shops, bars and restaurants. Ahmarra offer solutions to the challenges presented by Building Regulations and performance requirements to include a wide choice of options for facings, glazing including screens, fire ratings and acoustic requirements.

# KEY BENEFITS OF THIS RANGE

Ahmarra's unique approach aims to make the entire process as simple and practical as possible.

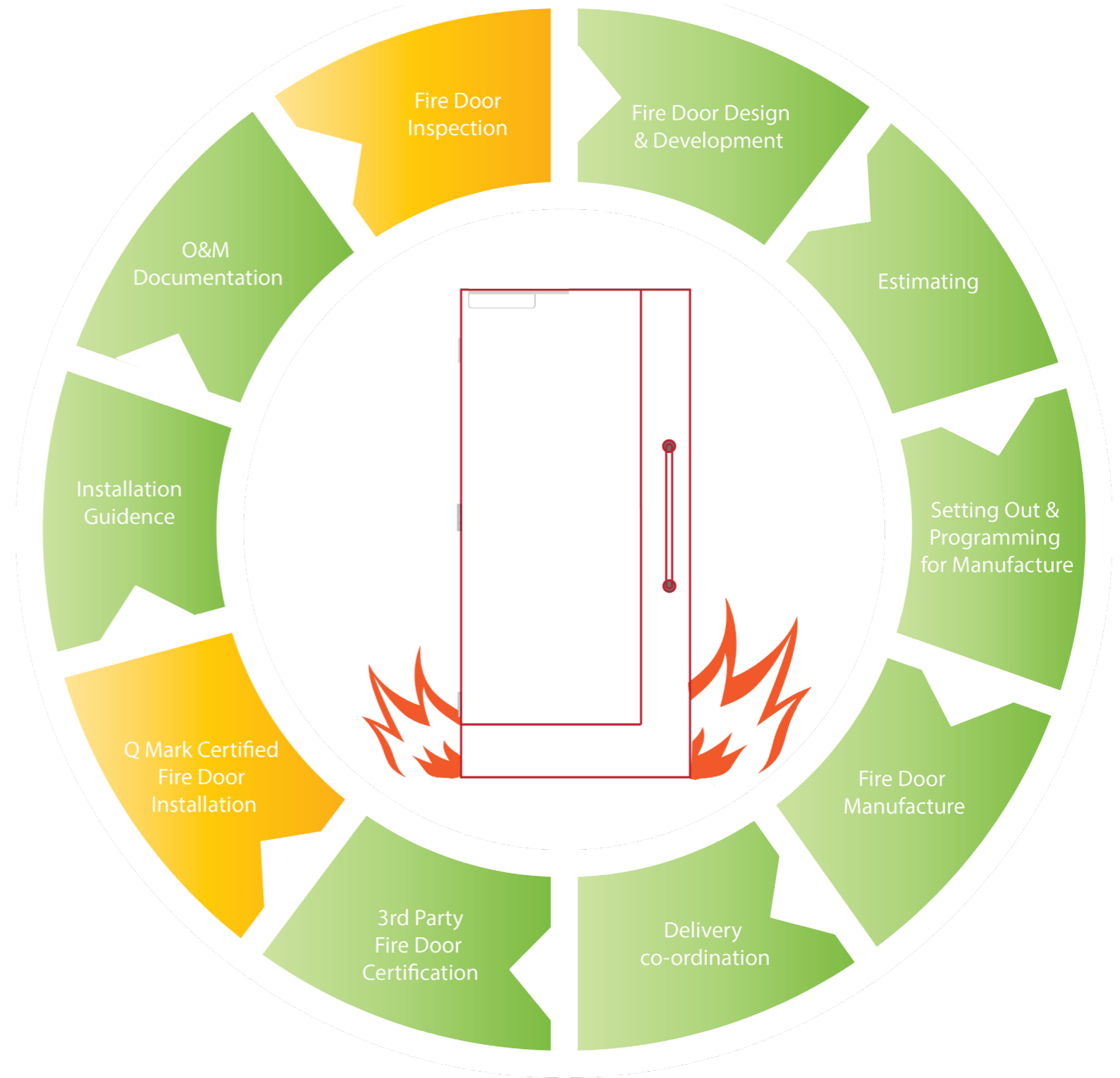
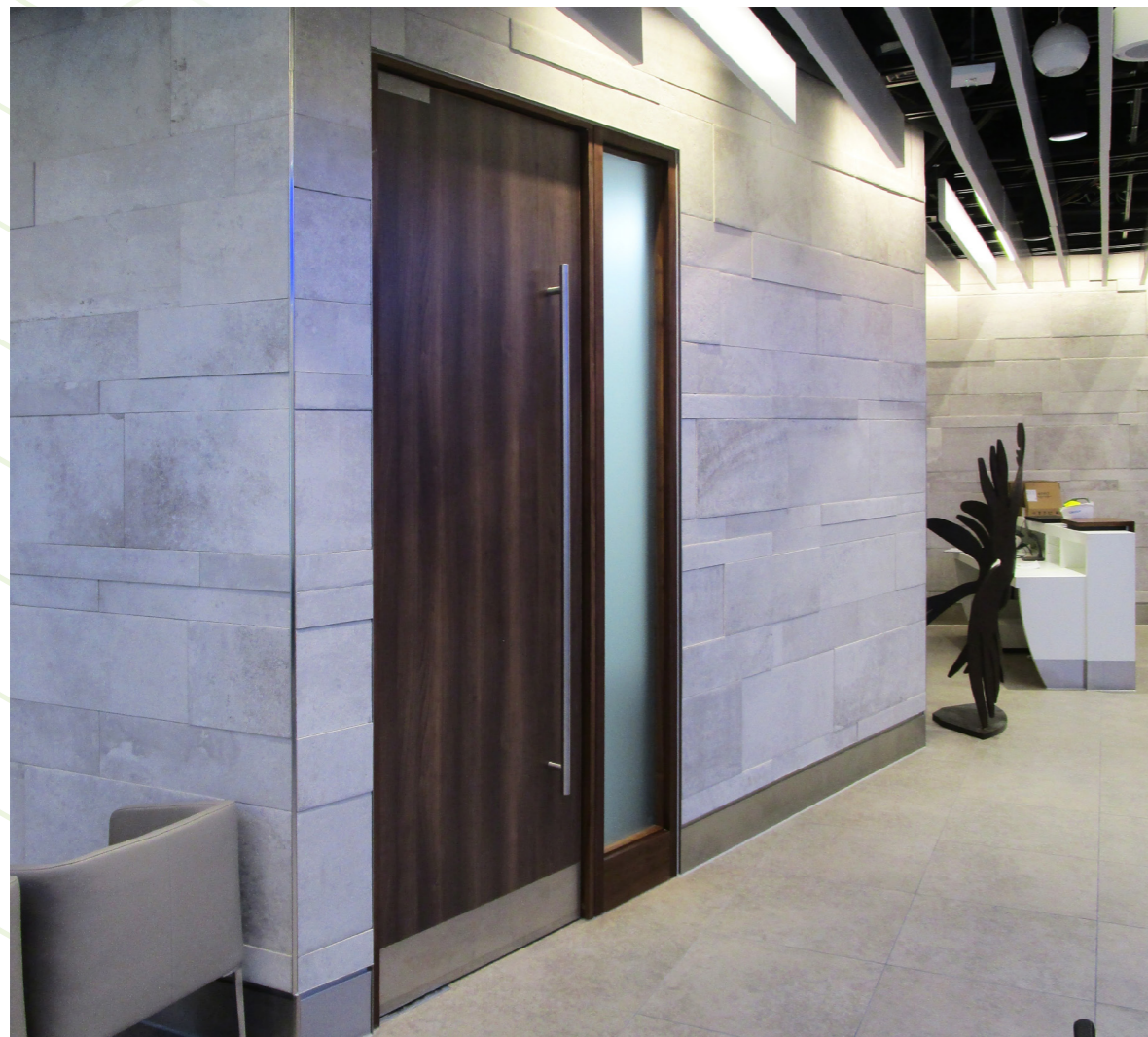
- Tried and tested in heavy traffic areas
- Pre-hung doorsets - door leaf pre-hung in frame
- Pre-defined ironmongery sets included
- SevereCore™ severe duty rated door core
- Innovative full height stainless steel push plates with protecting leading edge return
- Integral, interchangeable signage which is flush to the push plate.
- Third-party Q-Mark Timber Fire Door Manufacture certified
- Full choice of complementary facings and finishes
- Fully aligned ironmongery giving a sleek, professional design

We can offer a cradle to grave service which includes project management through to certified fire door installation.

## SPECIFICATION

To aid specification, this range of pre-defined doorsets offer a simple design solution whilst still allowing for options in facings and finishes enabling the specifier to tailor the design to their requirements.

Our aim is to make the entire process as simple and practical as possible, offering solutions to the challenges presented by Building Regulations including performance requirements and complex design issues.



- AS STANDARD WITHIN THE MERCANTILE RANGE
- ADDITIONAL SERVICES OFFERED

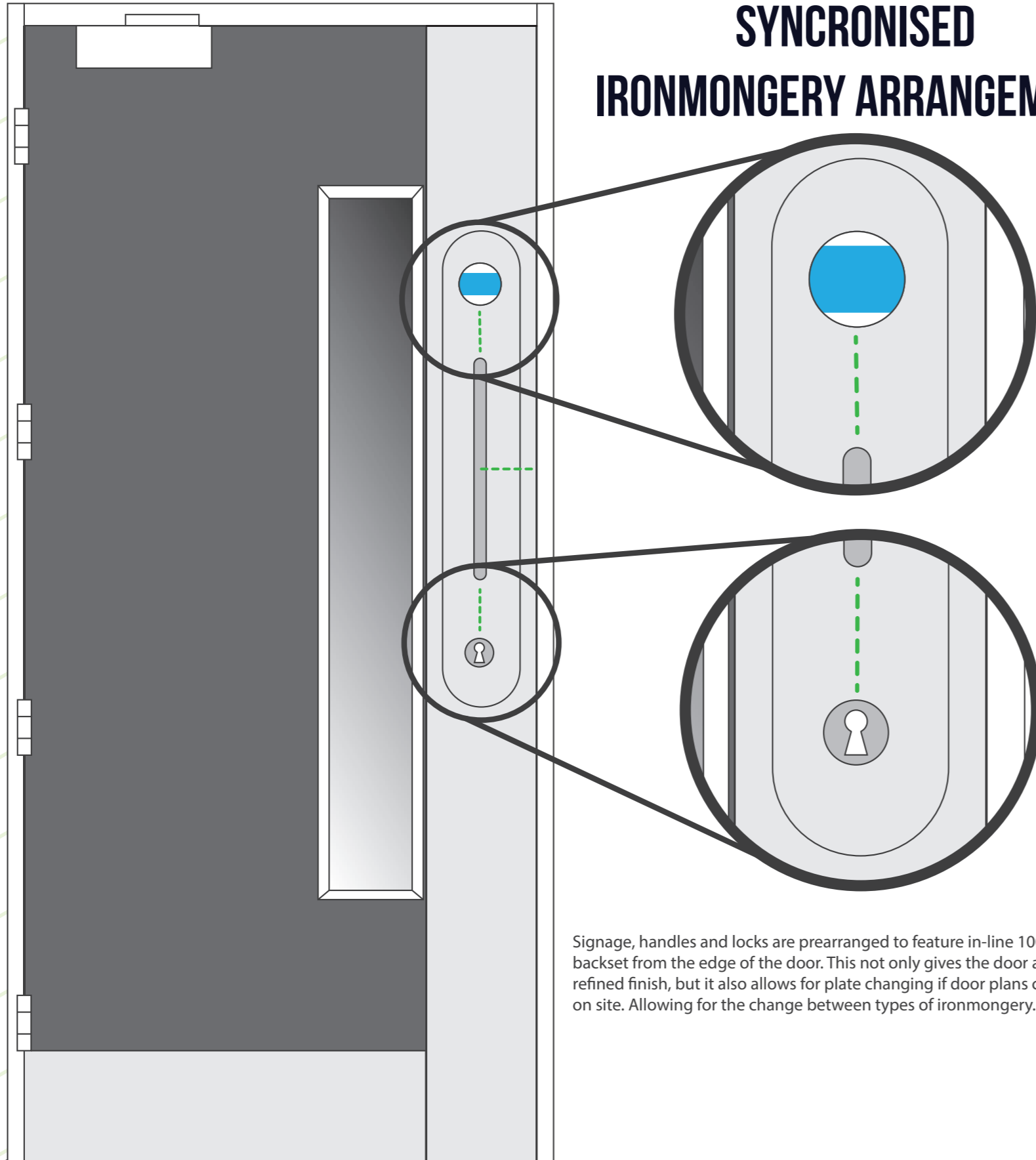
# STEEL EDGE PROTECTION PLATES

Our innovative stainless-steel protection plates have proved to be highly successful particularly in the airport sector, where the doors are often subject to daily abuse by luggage trolleys and suitcases.

The plates fully wrap around the edge of the door protecting the leading edge.

As well as the traditional stainless-steel finish, we can also offer PVD steel which is available in a multitude of colours and finishes.

## SYNCRONISED IRONMONGERY ARRANGEMENT



Signage, handles and locks are prearranged to feature in-line 100mm backset from the edge of the door. This not only gives the door a more refined finish, but it also allows for plate changing if door plans change on site. Allowing for the change between types of ironmongery.



# THE IMPORTANCE OF FIRE DOORS AND THIRD-PARTY CERTIFICATION

Fire doors save lives and protect property, so it is vital that they are manufactured and installed correctly or their fire-resistance can be seriously compromised. Third party certification provides an additional level of assurance of both the level and consistency of performance. It provides an independent, technical process for evaluating and approving systems, activities and doors against a set of defined criteria in standards and procedures.

## Q-MARK FIRE DOOR MANUFACTURER SCHEME

Ahmarra are proud to be certified members of the BM TRADA Q-Mark Timber Fire Door Manufacture Scheme. This comprehensive third-party certification for timber fire doors provides reassurance to architects, contractors and customers that the doorsets have been manufactured in accordance with test evidence and that performance and production are regularly checked through audit testing and inspections.



The Q-Mark scheme has been designed to allow fire door manufacturers to demonstrate that their doors meet the standards required, and to provide ongoing reassurance that their product is fit for purpose. Our Q-Mark certified doorsets are manufactured on a project-by-project basis at our production facility in Hampshire.

## FIRE RESISTANT DOORSET DEVELOPMENT

We specialise in working with clients and architects who recognise the vital importance of developing doorset standards throughout their facilities. Significant client cost savings can be made by eliminating the need to re-define doorsets & ironmongery for each new project.

This includes the unique development of such items as interchangeable push plates, which allow the customer greater flexibility when changing the use of doors. Savings can be made on the cost of replacing the whole door.

# CERTIFIED FIRE DOOR INSTALLATION

## Q-MARK FIRE DOOR INSTALLATION

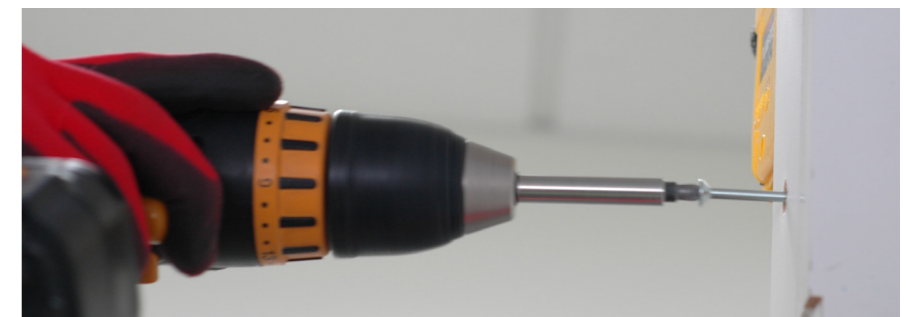


We can also offer Q-Mark certified fire door installation via our sister company, Ahmarra Door Installations Ltd (ADIL). ADIL are experts in the installation of certified performance doors under the Q-Mark Fire Door Installation Scheme.

Ahmarra offer full project management for every installation, from initial design through to site installation, every step of the process is carefully managed by our Project Director to ensure that the program runs smoothly, offering expert guidance to our clients.

We provide a highly-skilled team of certified fire door installers; all installers are skilled joiners and carpenters and time-served tradesmen. They are CSCS card holders and have been hand picked to have the right attitude and experience.

Our installers have installed thousands of certified fire doors and they have a wealth of knowledge in the fire door sector.



# DOORSET MATRIX

The Mercantile Range has been developed from our many years' experience of manufacturing doorsets for the commercial, office and airport sectors.

We have invested heavily in both the construction of our Mercantile Range of Doorsets, and our electronic technical download - accessible via our website. This details our standard doorset range, with hundreds of variations to suit the area of use for each door type. Our door types will cover the majority of requirements including fire ratings, vision panel variations, lever or pull handles, signage and access control.

To simplify the process of choosing the correct doors for your project, we have created a basic matrix which links to the full specification document. The example shown here demonstrates a standard doorset with options for door types, fire ratings, vision panels and access. The result will then give you the product code for the door type and ironmongery pack.

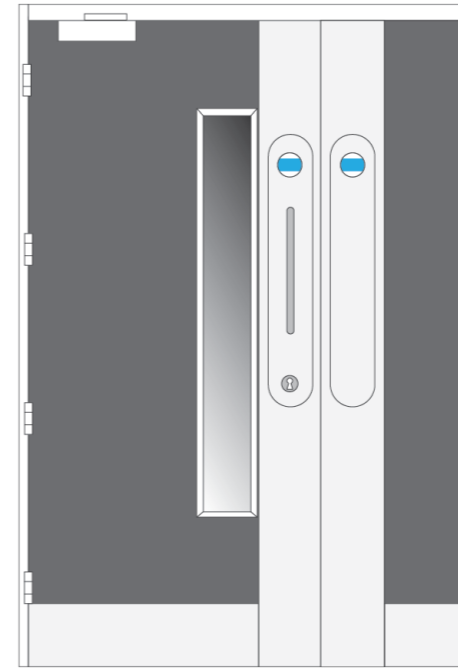
For more information, and to download the matrix and full specification please visit;

[www.ahmarra.co.uk/resource-centre/mercantile-range/](http://www.ahmarra.co.uk/resource-centre/mercantile-range/)

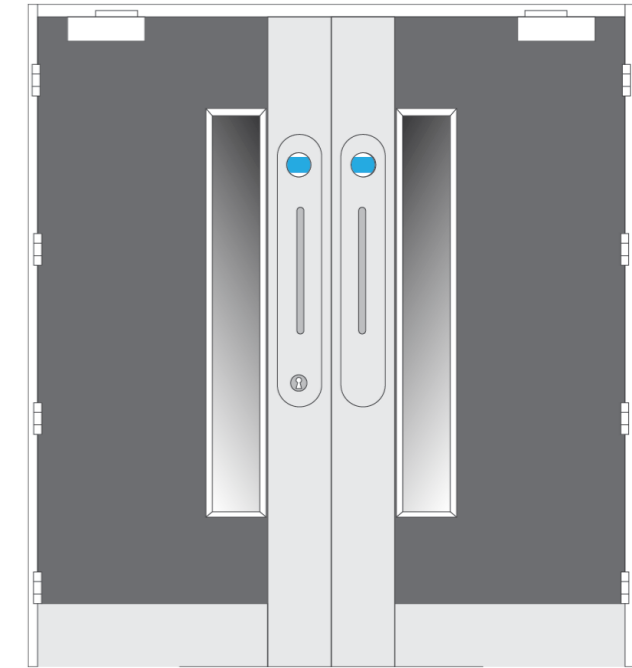
Single door



Leaf & Half door



Double door



## NFR

## FD30

## FD60

		ACCESS (Security Type)			NFR			FD30			FD60			
			Single door	Leaf & Half door	Double door	Single door	Leaf & Half door	Double door	Single door	Leaf & Half door	Double door	Single door	Leaf & Half door	Double door
With Vision Panel	Free Access (Double action Doorsets in Brackets)		1	4	7	2 (501)	5	8 (503)	3 (502)	6	9 (504)			
	CEM (Access Control)		1	4	7	2	5	8	3	6	9			
	Keyed Euro Cylinder - Thumbturn release		1e	4e	7e	2e	5e	8e	3e	6e	9e			
	Digital lock Manual, single face operation		1d	4d	7d	2d	5d	8d	3d	6d	9d			
	Held Open (by magnets) Passive closers (supplied by ahmarra)		-	-	-	2HO	5HO	8HO	3HO	6HO	9HO			
	Electro-Mechanical access Electronic closing device (by others)		1EM	4EM	7EM	2EM	5EM	8EM	3EM	6EM	9EM			
No Vision Panel	Keyed Euro Cylinder - Thumbturn release		1eNV	4eNV	7eNV	2eNV	5eNV	8eNV	3eNV	6eNV	9eNV			
	Digital lock Manual, single face operation		1dNV	4dNV	7dNV	2dNV	5dNV	8dNV	3dNV	6dNV	9dNV			

# STYLE GUIDE: LAMINATE

The style guide represents a very small portion of door decoration available through Ahmarra and our partnered facings specialists. Each design has been chosen to show a selection of variety, and give you a thorough overview of the range of styling available. The '£' indicators are an indicative guide to the pricing each PVD/SSS and Laminate finish compare against each other.

For additional information, or a quotation please contact us.

## LAMINATE



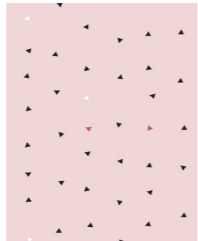
££  
Resopal - Platinum  
Metallic Art



££  
Polyrey™ - Bois de  
Pecan



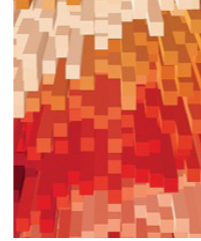
£  
Formica™ - Viola  
Matte



££  
Polyrey™ - Trial  
Rose



£££  
Hoboken Retro  
Oak



££  
Abet™ - Kosmo  
Cities



£  
Formica™ Energy  
laminate.



£££  
Kronospan™  
White Loft Pine  
laminate.



£  
Formica™ -  
Bermuda Matte



££  
Polyrey™ Ardoise  
Oxydee laminate.



£££  
Polyrey™ Zinc  
Argente laminate.



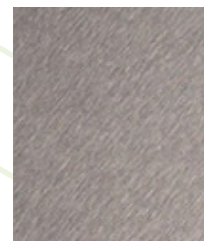
££  
Polyrey™ Wenge  
Poivre laminate.

We are also able to supply you doors with custom printed laminate, featuring design/artwork of your choice. For more information, lead times and pricing for this please contact one of our sales team.

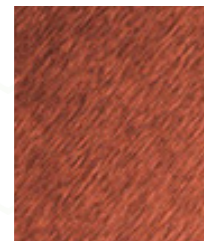


\*Veneer appearances will vary from pictured due to camera quality, grain and lighting. For an accurate representation - please contact our team for physical samples.

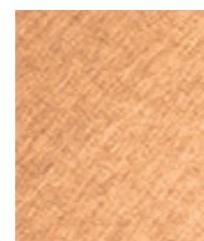
## STEEL & PVD STEEL



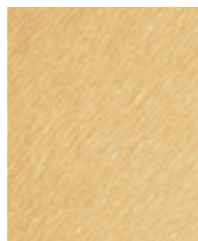
££  
PVD Steel Edge  
Plating - Gun Metal  
Brushed



££  
PVD Steel Edge  
Plating - Red  
Bronze Brushed



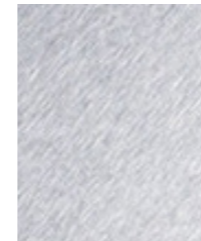
££  
PVD Steel Edge  
Plating - Rose  
Brushed



££  
PVD Steel Edge  
Plating - Brass  
Brushed



££  
PVD Steel Edge  
Plating - Chocolate  
Brushed



£  
Classic Steel Edge  
Plating - Satin  
Stainless Steel



# STYLE GUIDE: WOOD VENEER

Real wood veneers offer sustainability, durability, and a natural aesthetic.

## BENEFITS

- Natural aesthetic
- Range of colours & grains
- Available with 'Hygienilac' lacquer
- Crown or quarter cut

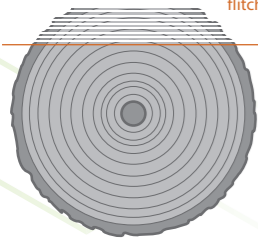


## MATCHING SERVICE

We appreciate that you may have a specific laminate, veneer or stained veneer in mind for your doors, perhaps on a piece of furniture. If you can supply us with a sample we may be able to match it for you. We have successfully done this on many occasions, ensuring our customers achieve the finish they desire.

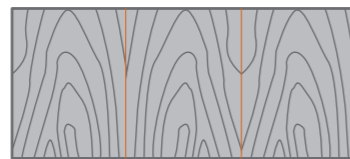
## CROWN CUT

Log cut horizontally into flitches

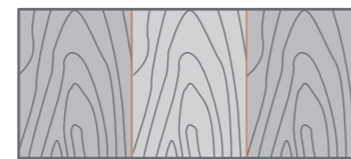


A slicer passes through the log on a plane tangential to these growth rings. The result is a roughly symmetrical, central grain pattern that is characterised by a 'cathedraling' of the grain and also ellipses and ovals. This form of slicing produces an attractive and regular form termed 'crown' veneer.

### BOOK MATCH

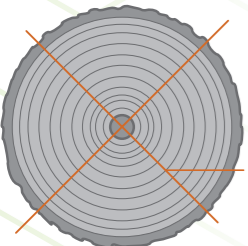


### SLIP MATCH



## QUARTER CUT

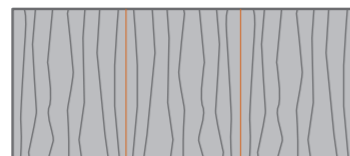
Log cut into quarters



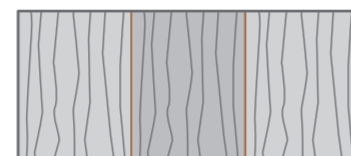
Quarters cut into flitches

Quarter cut veneer is straight grained, which allows for continuity to be achieved throughout a project.

### BOOK MATCH



### SLIP MATCH



## SAMPLE SERVICE

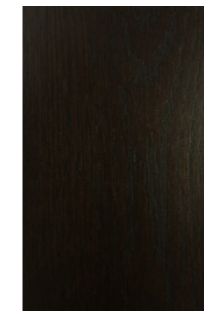
Due to the nature of wood, photography may vary and be inaccurate in depicting the uniqueness of veneer and stained veneer. We are happy to provide our customers with samples of our veneers and stained veneers.

## FULL RANGE

We are constantly developing new stains and can only represent a small sample of our capabilities in this brochure. We can also offer pre-dyed veneer. If you require more information contact our sales team who will be able to talk you through additional options.



## STAINED VENEER



WOODROW OAK\* Crown cut.



DARK WALNUT\* Crown cut.



EBONY ASH\* Crown cut.



EBONY OAK\* Crown cut.



CREME\* Crown cut.



LINEN\* Crown cut.

## WOOD VENEER



AMERICAN ASH\* Crown Cut



AMERICAN WHITE OAK\* Quarter Cut



AMERICAN BLACK WALNUT\* Crown Cut



AMERICAN CHERRY\* Quarter Cut



The mark of responsible forestry

These pages only represent a small sample of our facing options. For more details refer to our "Facings and Finishes" brochure.

\*Veneer appearances will vary from pictured due to camera quality, grain and lighting. For an accurate representation - please contact our team for physical samples.



# MERCANTILE RANGE

## A CLIENT FOCUSED APPROACH

We remain focused on providing excellent customer service from inception to completion of your project.

We do this through our tried and trusted management and installation teams, who implement first rate procedures ensuring projects are delivered on time and to the clients' expectations.

We build long term relationships with our clients because we take the time to understand their needs and we treat every job as our passport to future business.

---

### FREE ADVICE & SAMPLE SERVICE

Our experienced team are happy to offer you expert advice and facing samples if required, please contact us:

phone: 02392 389 076  
email: [sales@ahmarra.co.uk](mailto:sales@ahmarra.co.uk)  
website: [www.ahmarra.co.uk](http://www.ahmarra.co.uk)

Ahmarra Door Solutions  
Unit 2 Hermitage Park  
Harts Farm Way  
Havant  
Hampshire  
PO9 1FA